

# RURAL KING OUTLOT OPPORTUNITY

Owensboro, Kentucky



## HIGHLIGHTS

- Join Rural King, Kroger, and T&T Vendors Mall
- Nearby Owensboro Health Regional Hospital is the city's largest employer, with 4,200 employees and 477 beds
- Population of nearly 100,000 people within 10 miles, with average household incomes of \$70,000
- Daytime population of over 44,000 within a 5-mile radius
- **AVAILABLE:** 1.5 AC outlot

## DEMOGRAPHICS

POPULATION	5 MILE	10 MILE	15 MILE	20 MILE	30 MILE
2027 Projection	75,648	98,633	118,072	142,897	387,676
2022 Estimate	74,516	97,093	116,347	141,016	382,842
INCOME	5 MILE	10 MILE	15 MILE	20 MILE	30 MILE
2022 Average	\$68,785	\$70,804	\$71,861	\$72,953	\$72,186
2022 Median	\$48,579	\$51,846	\$54,038	\$55,604	\$53,667
DAYTIME POPULATION	5 MILE	10 MILE	15 MILE	20 MILE	30 MILE
2022 Employees	44,195	49,296	52,187	58,442	172,136

## LEASING INFORMATION

www.goodmanrealestate.com  
216.381.8200

### CLEVELAND

THE OFFICES OF LEGACY VILLAGE  
25333 CEDAR ROAD, SUITE 305  
CLEVELAND, OH 44124

### COLUMBUS

389 E. LIVINGSTON AVENUE  
COLUMBUS, OHIO 43215

### ALEX JUSTICE

alexandria@goodmanrealestate.com

in conjunction with State of Kentucky licensed broker

### RICHARD EDELMAN

Goodman Real Estate Services Group LLC



# LEASING INFORMATION

www.goodmanrealestate.com

216.381.8200

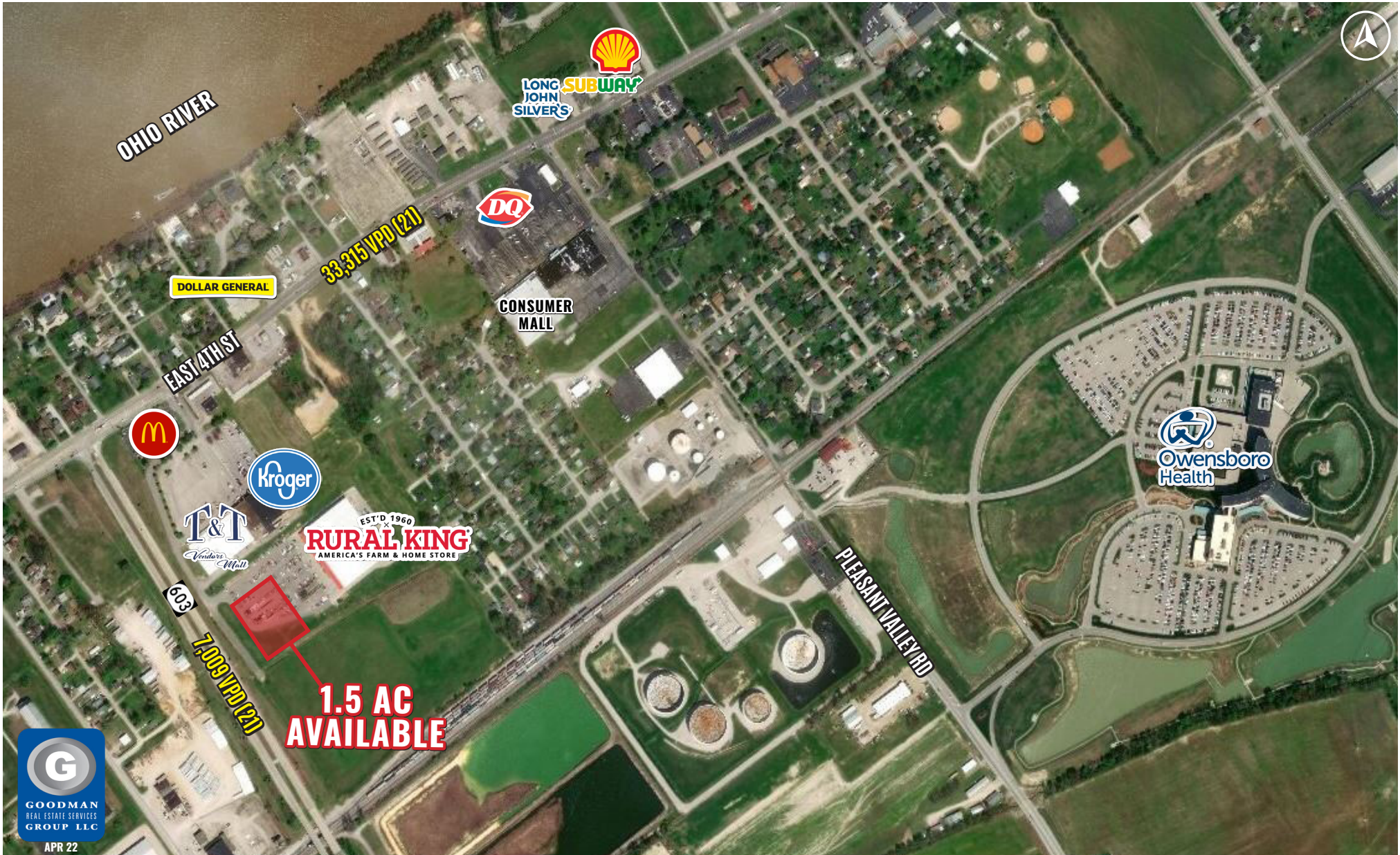
**ALEX JUSTICE**  
alexandria@goodmanrealestate.com

— in conjunction with State of Kentucky licensed broker —

**RICHARD EDELMAN**  
Goodman Real Estate Services Group LLC

# RURAL KING OUTLOT OPPORTUNITY

## Owensboro, Kentucky



APR 22