



WWW.GOODMANREALESTATE.COM  
216.381.8200

# GERMAN VILLAGE REDEVELOPMENT

Columbus, Ohio



## HIGHLIGHTS

- New mixed-use development in German Village in close proximity to the city's Central Business District
- Located on East Livingston Avenue (15,465 VPD) between South 9th Street and South Washington Avenue
- Serves adjacent Nationwide Children's Hospital campus, the 2nd largest pediatric hospital in the country with more than 1.8M patient visits and over 20,000 employees across multiple research, emergency, and specialty care buildings
- Directly across from NCH's Behavioral Health Pavilion, the largest pediatric-focused behavioral health center in the country
- NCH is constructing a second inpatient tower, an orthopedic and outpatient surgery center, a parking garage, and a fifth laboratory research building as part of a \$3.3B strategic plan

## DEMOGRAPHICS

POPULATION	1 MILE	3 MILE	5 MILE
2028 Projection	25,076	127,297	336,519
2023 Estimate	23,506	122,154	330,810
AVERAGE INCOME	1 MILE	3 MILE	5 MILE
2023 Projection	\$95,523	\$83,226	\$74,722
2023 Estimate	\$69,501	\$57,394	\$52,355
DAYTIME POPULATION	1 MILE	3 MILE	5 MILE
2023 Employees	40,454	121,049	227,038

## LEASING INFORMATION

www.goodmanrealestate.com  
216.381.8200

### CLEVELAND

THE OFFICES OF LEGACY VILLAGE  
25333 CEDAR ROAD, SUITE 305  
CLEVELAND, OH 44124

### COLUMBUS

389 E. LIVINGSTON AVENUE  
COLUMBUS, OHIO 43215

## DANIEL CLARK

VP & Manager, Columbus Office  
daniel@goodmanrealestate.com



## LEASING INFORMATION

www.goodmanrealestate.com  
216.381.8200

## DANIEL CLARK

VP & Manager, Columbus Office  
daniel@goodmanrealestate.com

# GERMAN VILLAGE REDEVELOPMENT

## Columbus, Ohio





# LEASING INFORMATION

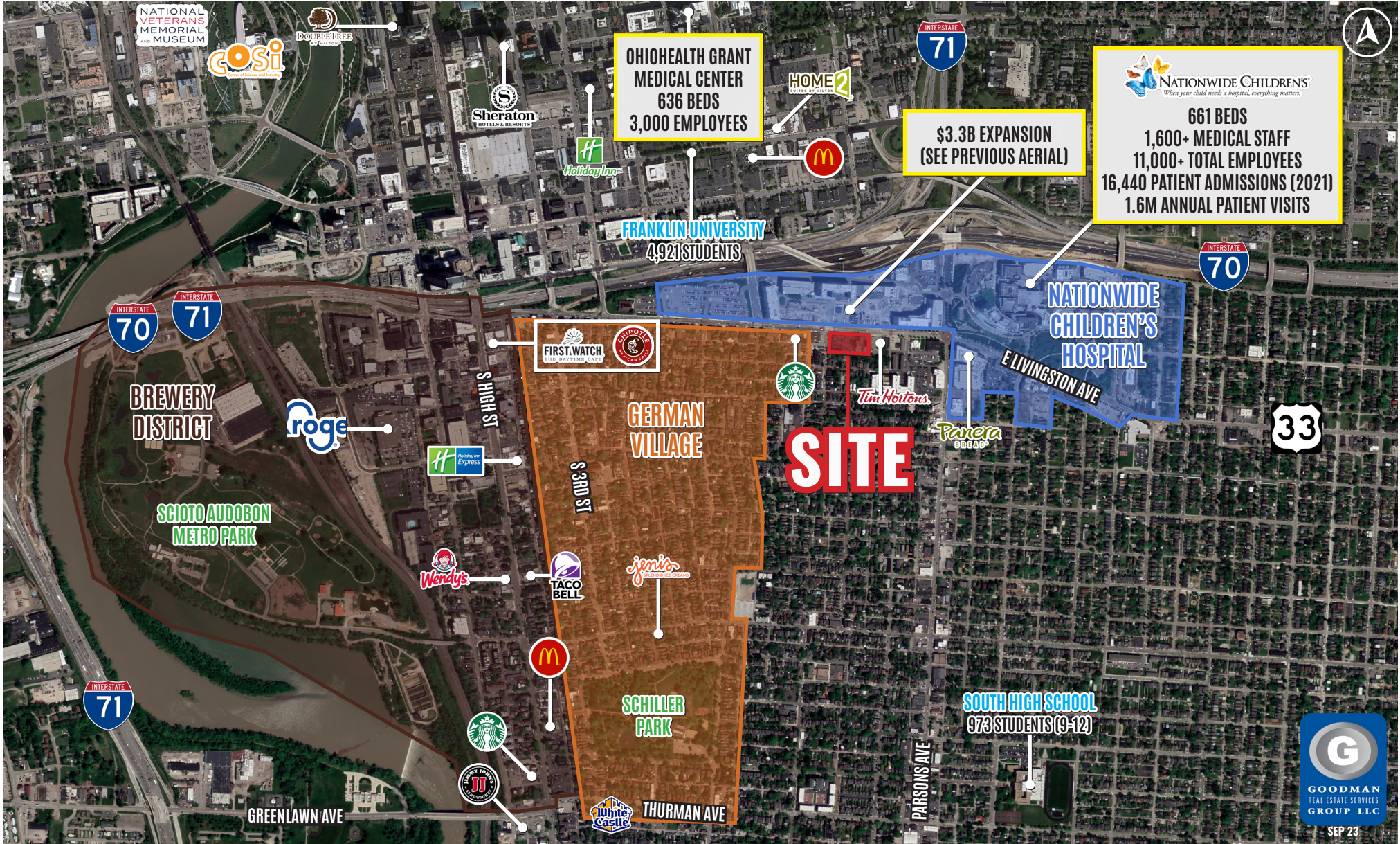
www.goodmanrealestate.com  
216.381.8200

## DANIEL CLARK

VP & Manager, Columbus Office  
daniel@goodmanrealestate.com

# GERMAN VILLAGE REDEVELOPMENT

## Columbus, Ohio



THE INFORMATION ABOVE HAS BEEN OBTAINED FROM SOURCES BELIEVED TO BE RELIABLE. GOODMAN REAL ESTATE SERVICES GROUP LLC AND ITS AGENTS, ASSOCIATES, AND EMPLOYEES MAKE NO GUARANTEE, WARRANTY OR REPRESENTATION ABOUT IT. ALL IMAGES CONTAINED HEREIN ARE THE PROPERTY OF GOODMAN REAL ESTATE SERVICES GROUP LLC AND SHALL NOT BE DUPLICATED OR REPRODUCED WITHOUT EXPRESS WRITTEN CONSENT OF GOODMAN REAL ESTATE SERVICES GROUP LLC. YOU ACKNOWLEDGE THAT, AS REQUIRED BY THE STATE OF OHIO, YOU HAVE RECEIVED THE CONSUMER GUIDE TO AGENCY RELATIONSHIPS.





# GERMAN VILLAGE REDEVELOPMENT

Columbus, Ohio

## LEASING INFORMATION

### CLEVELAND

THE OFFICES OF LEGACY VILLAGE  
25333 CEDAR ROAD, SUITE 305  
CLEVELAND, OH 44124

**DANIEL CLARK**

Vice President & Manager, Columbus Office

daniel@goodmanrealestate.com

P 216.381.8200

F 216.381.8211

### COLUMBUS

389 E. LIVINGSTON AVENUE  
COLUMBUS, OHIO 43215

[WWW.GOODMANREALESTATE.COM](http://WWW.GOODMANREALESTATE.COM)

### KEY

	LEASED		NEGOTIATING
	AVAILABLE		NOT PART

UNIT	TENANT	SIZE (SQ. FT.)
1	Panda Express	2,676
2	Available	1,593
3	Available	1,521
4	Chipotle	2,221
5	Negotiating	2,202
6	Negotiating	1,713
7	Available	1,713
8	Orangetheory	3,264
9	Five Guys	2,559

SITE SUMMARY 19,462

