



WWW.GOODMANREALESTATE.COM
216.381.8200

BETHEL WOODS SHOPS

Marysville, Ohio



HIGHLIGHTS

- New 8,450 SF retail and restaurant development located at a signalized intersection
- Anchored by Kroger Marketplace (one of Central Ohio's top producing Krogers)
- Located within 2.5 miles of Rural King, Walmart, Union County Airport, Union County Fairgrounds, Memorial Hospital, and City Gate Medical Center
- Conveniently located one-quarter mile from US 33 with over 33,000 vehicles per day
- Ideal for restaurants, convenience retail, and daily needs
- Caters to Honda's largest manufacturing facility in Ohio, Scotts Miracle-Gro Corporate Headquarters, Nestle, and Univentre
 - Honda: 4M SF manufacturing facility; 13th largest employer in Ohio
 - Scotts Miracle-Gro Headquarters: 923 employees
 - Univentre: 249 employees
 - Nestle: 230 employees

DEMOGRAPHICS

POPULATION	3 MILE	5 MILE	7 MILE
2029 Projection	29,825	36,566	41,356
2024 Estimate	28,390	34,835	39,517
INCOME	3 MILE	5 MILE	7 MILE
2024 Average	\$97,856	\$97,613	\$99,400
2024 Median	\$82,557	\$82,469	\$83,864
DAYTIME POPULATION	3 MILE	5 MILE	7 MILE
2024 Employees	16,959	19,853	21,498

LEASING INFORMATION

www.goodmanrealestate.com
216.381.8200

CLEVELAND

THE OFFICES OF LEGACY VILLAGE
25333 CEDAR ROAD, SUITE 305
CLEVELAND, OH 44124

COLUMBUS

389 E. LIVINGSTON AVENUE
COLUMBUS, OHIO 43215

DANIEL CLARK

VP and Manager, Columbus Office
daniel@goodmanrealestate.com

JOE BELINSKE

Sales Associate, Columbus Office
joe@goodmanrealestate.com

216.381.8200

DANIEL CLARK

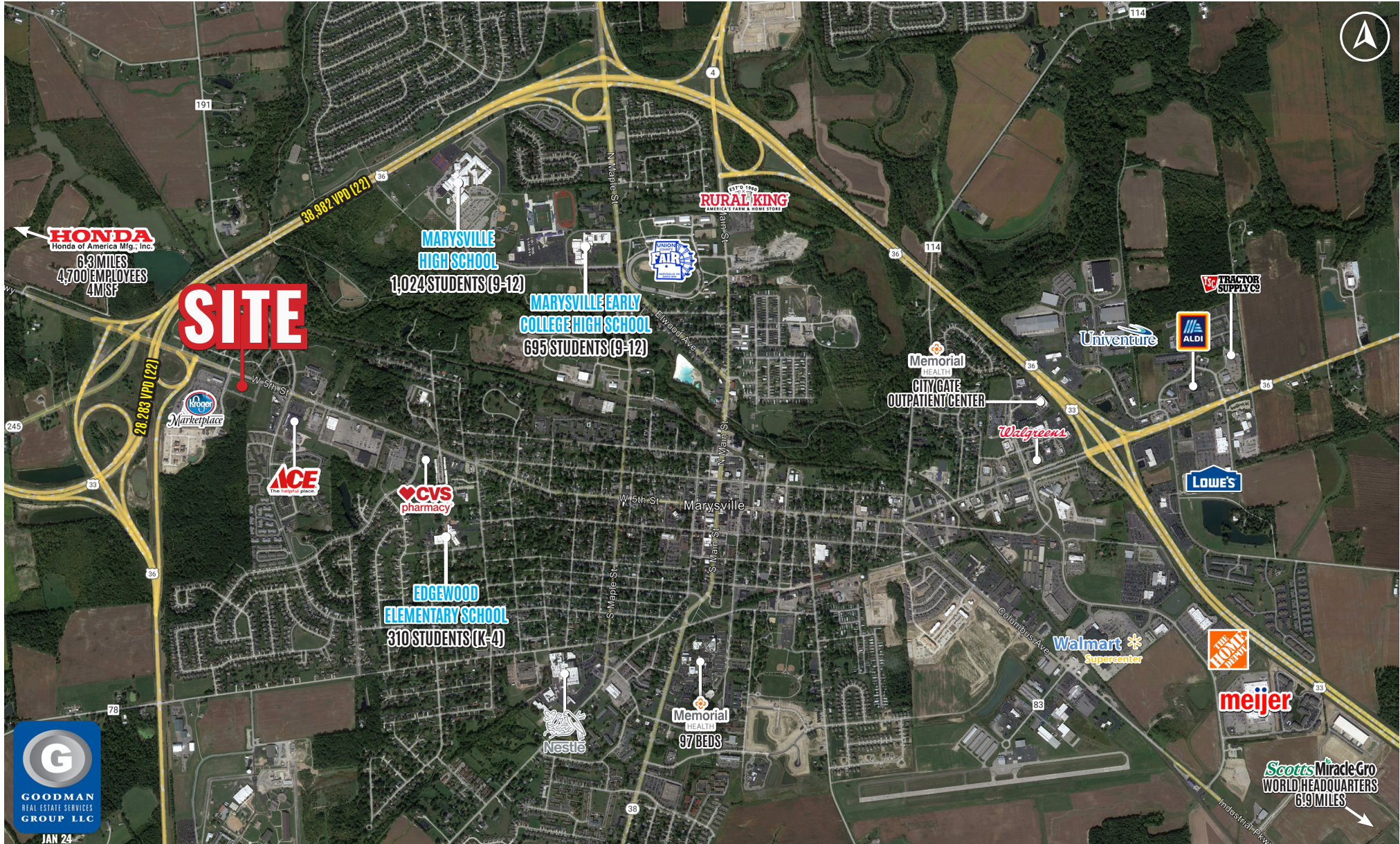
VP and Manager, Columbus Office
daniel@goodmanrealestate.com

JOE BELINSKE

Sales Associate, Columbus Office
joe@goodmanrealestate.com

BETHEL WOODS SHOPS

Marysville, Ohio





BETHEL WOODS SHOPS

Marysville, Ohio

KEY



LEASED



NEGOTIATING



AVAILABLE



NOT PART

UNIT	TENANT	SIZE (SQ. FT.)
1	Negotiating	2,550
2	Great Clips	1,500
3	Available	1,464
4	Available	3,210
5	Chipotle	2,380
SITE SUMMARY		11,104

LEASING INFORMATION

DANIEL CLARK

Vice President & Manager, Columbus Office
daniel@goodmanrealestate.com

JOE BELINSKE

Sales Associate, Columbus Office
joe@goodmanrealestate.com

CLEVELAND

THE OFFICES OF LEGACY VILLAGE
25333 CEDAR ROAD, SUITE 305
CLEVELAND, OH 44124

COLUMBUS

389 E. LIVINGSTON AVENUE
COLUMBUS, OHIO 43215

P 216.381.8200

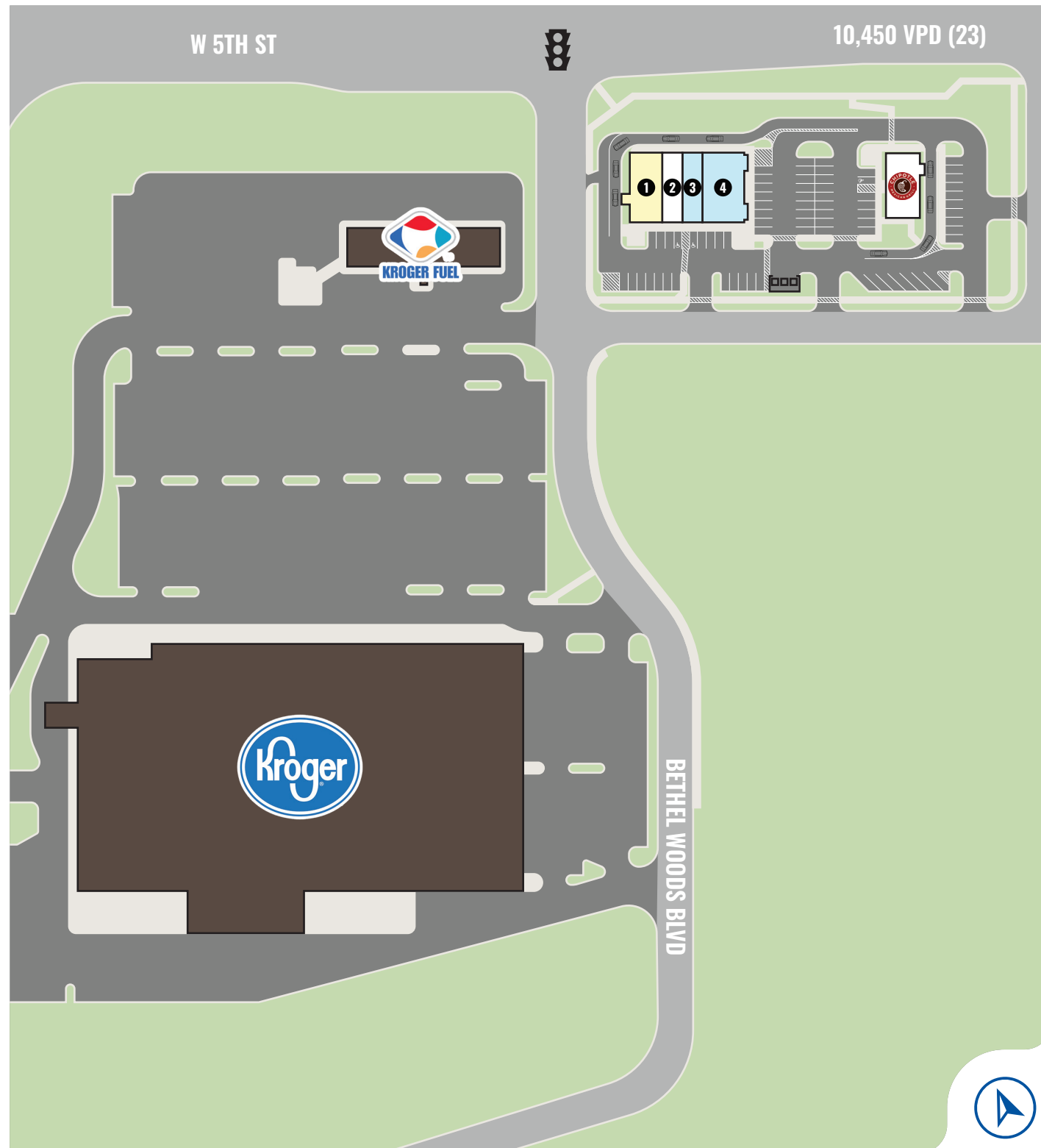
F 216.381.8211

WWW.GOODMANREALESTATE.COM

W 5TH ST



10,450 VPD (23)



THE INFORMATION ABOVE HAS BEEN OBTAINED FROM SOURCES BELIEVED TO BE RELIABLE. GOODMAN REAL ESTATE SERVICES GROUP LLC AND ITS AGENTS, ASSOCIATES, AND EMPLOYEES MAKE NO GUARANTEE, WARRANTY OR REPRESENTATION ABOUT IT. ALL IMAGES CONTAINED HEREIN ARE THE PROPERTY OF GOODMAN REAL ESTATE SERVICES GROUP LLC AND SHALL NOT BE DUPLICATED OR REPRODUCED WITHOUT EXPRESS WRITTEN CONSENT OF GOODMAN REAL ESTATE SERVICES GROUP LLC. YOU ACKNOWLEDGE THAT, AS REQUIRED BY THE STATE OF OHIO, YOU HAVE RECEIVED THE CONSUMER GUIDE TO AGENCY RELATIONSHIPS.



BETHEL WOODS SHOPS

Marysville, Ohio

LEASING INFORMATION

P 216.381.8200
F 216.381.8211

WWW.GOODMANREALESTATE.COM

CLEVELAND

THE OFFICES OF LEGACY VILLAGE
25333 CEDAR ROAD, SUITE 305
CLEVELAND, OH 44124

COLUMBUS

389 E. LIVINGSTON AVENUE
COLUMBUS, OHIO 43215

DANIEL CLARK

VP & Manager, Columbus Office
daniel@goodmanrealestate.com

JOE BELINSKE

Sales Associate, Columbus Office
joe@goodmanrealestate.com

KEY

- ☐ LEASED ☐ NEGOTIATING
☐ AVAILABLE ☐ NOT PART

UNIT	TENANT	SIZE (SQ. FT.)
1	Negotiating	2,550
2	Great Clips	1,500
3	Available	1,464
4	Available	3,210
5	Chipotle	2,380



W 5TH ST

10,450 VPD (23)



BETHEL WOODS BLVD

ACCESS ROAD

ACCESS ROAD

