



WWW.GOODMANREALESTATE.COM  
216.381.8200

# PORTAGE SQUARE PLAZA

Wooster, Ohio



## HIGHLIGHTS

- Located at the corner of Portage Road and Akron Road (SR 585) just east of the Dix Expressway in Wooster
- Join Planet Fitness, Dollar Tree, and Mission Thrift
- Under Construction and Opening Soon: Dahlia Laundry Center
- Resurfaced, large parking lot, among other improvements
- **AVAILABLE:**
  - Inline spaces: 2,181 SF and up to 14,509 SF
  - Outparcel opportunity

## DEMOGRAPHICS

POPULATION	5 MILE	7 MILE	10 MILE
2027 Projection	37,289	51,235	72,579
2022 Estimate	37,484	51,477	72,817
INCOME	5 MILE	7 MILE	10 MILE
2022 Average	\$71,295	\$72,985	\$74,242
2022 Median	\$54,073	\$57,428	\$58,824
DAYTIME POPULATION	5 MILE	7 MILE	10 MILE
2022 Employees	27,696	30,762	38,446

**LEASING INFORMATION**  
www.goodmanrealestate.com  
216.381.8200

**CLEVELAND** THE OFFICES OF LEGACY VILLAGE  
25333 CEDAR ROAD, SUITE 305  
CLEVELAND, OH 44124

**COLUMBUS** 389 E. LIVINGSTON AVENUE  
COLUMBUS, OHIO 43215

**ZACK SOGOLOFF**  
Senior Vice President  
zack@goodmanrealestate.com

**SETH MARKS**  
Senior Director  
seth@goodmanrealestate.com

THE INFORMATION ABOVE HAS BEEN OBTAINED FROM SOURCES BELIEVED TO BE RELIABLE. GOODMAN REAL ESTATE SERVICES GROUP LLC AND ITS AGENTS, ASSOCIATES, AND EMPLOYEES MAKE NO GUARANTEE, WARRANTY OR REPRESENTATION ABOUT IT. ALL IMAGES CONTAINED HEREIN ARE THE PROPERTY OF GOODMAN REAL ESTATE SERVICES GROUP LLC AND SHALL NOT BE DUPLICATED OR REPRODUCED WITHOUT EXPRESS WRITTEN CONSENT OF GOODMAN REAL ESTATE SERVICES GROUP LLC. YOU ACKNOWLEDGE THAT, AS REQUIRED BY THE STATE OF OHIO, YOU HAVE RECEIVED THE CONSUMER GUIDE TO AGENCY RELATIONSHIPS.



# LEASING INFORMATION

www.goodmanrealestate.com

216.381.8200

## ZACK SOGOLOFF

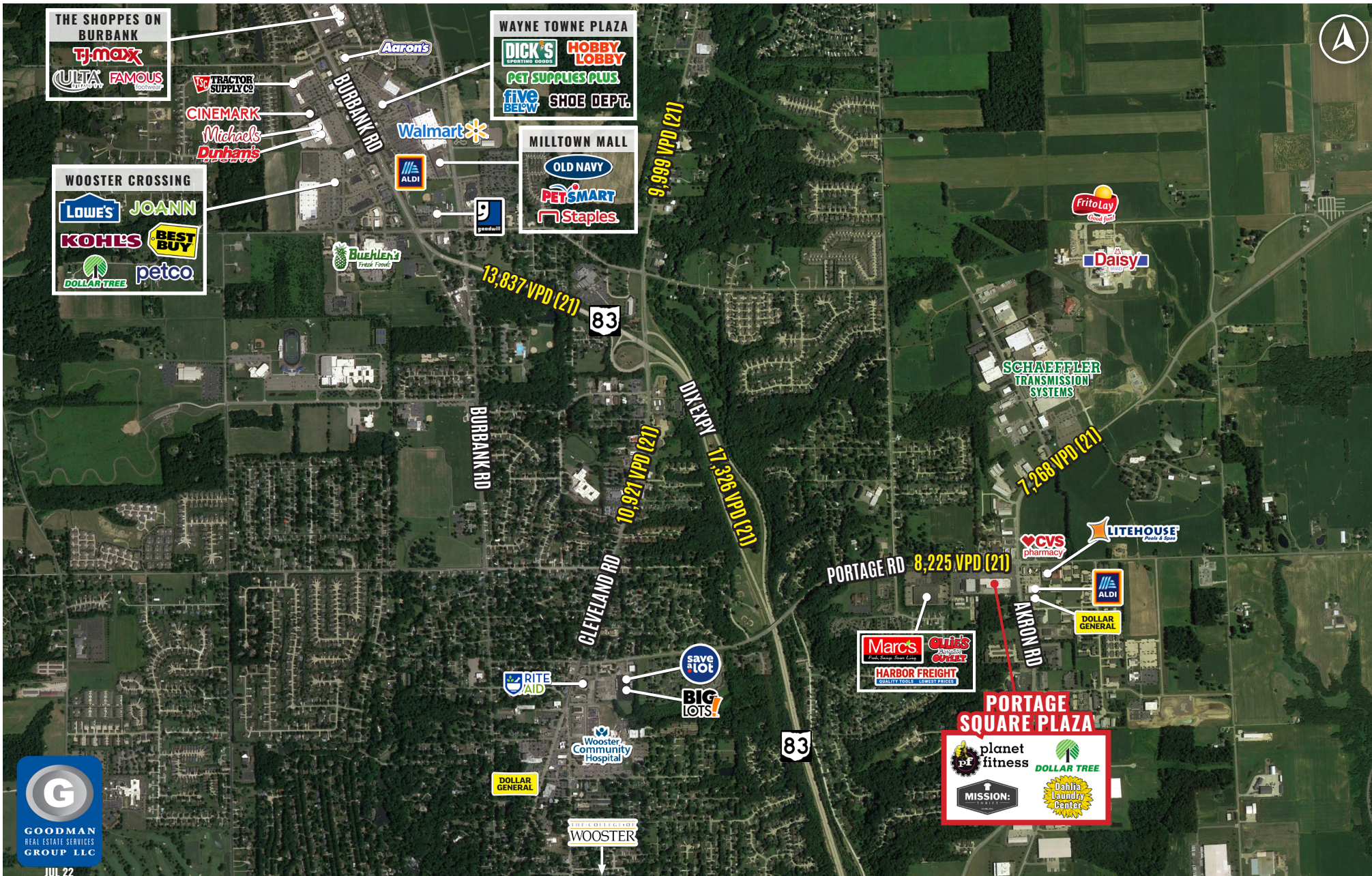
Senior Vice President  
zack@goodmanrealestate.com

## SETH MARKS

Senior Director  
seth@goodmanrealestate.com

# PORTAGE SQUARE PLAZA

## Wooster, Ohio





# PORTAGE SQUARE PLAZA

Wooster, Ohio

## LEASING INFORMATION

P 216.381.8200  
F 216.381.8211

[WWW.GOODMANREALESTATE.COM](http://WWW.GOODMANREALESTATE.COM)

### CLEVELAND

THE OFFICES OF LEGACY VILLAGE  
25333 CEDAR ROAD, SUITE 305  
CLEVELAND, OH 44124

### COLUMBUS

389 E. LIVINGSTON AVENUE  
COLUMBUS, OHIO 43215

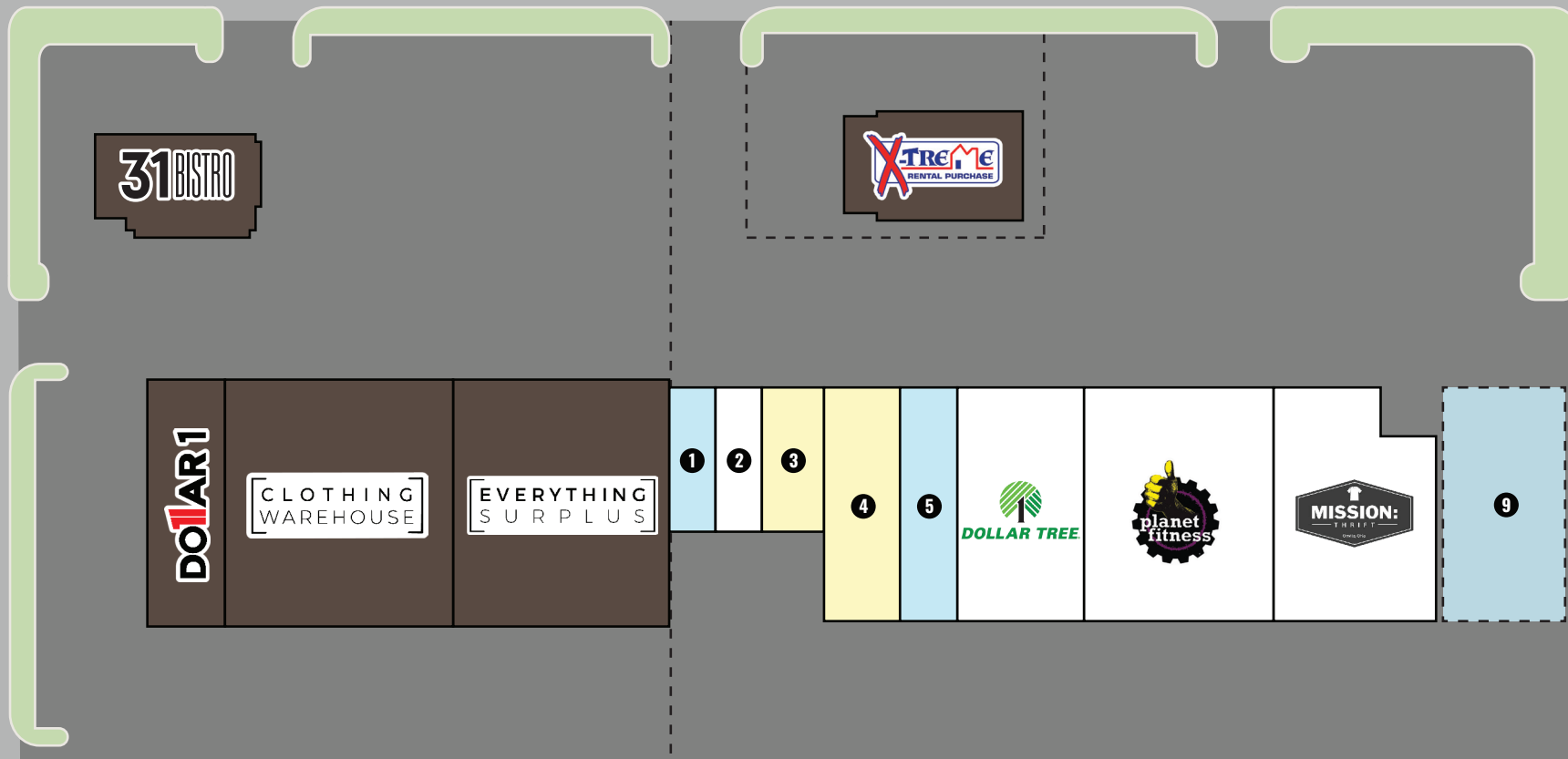
### ZACK SOGOLOFF

Senior Vice President  
zack@goodmanrealestate.com

### SETH MARKS

Senior Director  
seth@goodmanrealestate.com

KEY	UNIT	TENANT	SIZE (SQ. FT.)
LEASED	1	Available	2,181
AVAILABLE	2	Dahlia Laundry Center	2,992
CALL FOR DETAILS	3	Call for Details	3,468
CALL FOR DETAILS	4	Call for Details	6,861
AVAILABLE	5	Available	4,180
CALL FOR DETAILS	6	Dollar Tree	11,200
CALL FOR DETAILS	7	Planet Fitness	16,500
CALL FOR DETAILS	8	Mission: Thrift	15,360
NOT PART	9	Potential Ourparcel	
	<b>SITE SUMMARY</b>		<b>62,742</b>



PORTAGE RD 8,225 VPD (21)

AKRON RD 7,268 VPD (21)



THE INFORMATION ABOVE HAS BEEN OBTAINED FROM SOURCES BELIEVED TO BE RELIABLE. GOODMAN REAL ESTATE SERVICES GROUP LLC AND ITS AGENTS, ASSOCIATES, AND EMPLOYEES MAKE NO GUARANTEE, WARRANTY OR REPRESENTATION ABOUT IT. ALL IMAGES CONTAINED HEREIN ARE THE PROPERTY OF GOODMAN REAL ESTATE SERVICES GROUP LLC AND SHALL NOT BE DUPLICATED OR REPRODUCED WITHOUT EXPRESS WRITTEN CONSENT OF GOODMAN REAL ESTATE SERVICES GROUP LLC. YOU ACKNOWLEDGE THAT, AS REQUIRED BY THE STATE OF OHIO, YOU HAVE RECEIVED THE CONSUMER GUIDE TO AGENCY RELATIONSHIPS.