



WWW.GOODMANREALESTATE.COM

216.381.8200

# THE SHOPS ON LEAVITT A NEW RETAIL DEVELOPMENT

Lorain, Ohio



## HIGHLIGHTS

- Join T.J.Maxx and Five Below in a new shopping center opening in 2024 in the dynamic Lorain-Amherst trade area
- Walmart, The Home Depot, and Kohl's anchor the successful Lighthouse Village shopping center located directly across the street from this new development
- Famous Footwear, Skechers, Pet Supplies Plus, Starbucks, Applebee's and more quality retailers and restaurants are among the strong tenant line-up in Lighthouse Village
- This trade area includes Meijer, Michael's, Tractor Supply Co., Giant Eagle, Target, Lowe's, Panera, Chick-fil-A, Chipotle, Five Guys, and many more national and regional retailers and restaurants
- **AVAILABLE:** 14,625 SF

## DEMOGRAPHICS

| POPULATION         | 3 MILE   | 5 MILE   | 7 MILE   |
|--------------------|----------|----------|----------|
| 2027 Projection    | 55,908   | 91,648   | 136,023  |
| 2022 Estimate      | 56,163   | 92,489   | 137,084  |
| INCOME             | 3 MILE   | 5 MILE   | 7 MILE   |
| 2022 Average       | \$60,287 | \$60,373 | \$61,067 |
| 2022 Median        | \$45,132 | \$45,445 | \$47,052 |
| DAYTIME POPULATION | 3 MILE   | 5 MILE   | 7 MILE   |
| 2022 Employees     | 17,162   | 26,620   | 45,426   |

## LEASING INFORMATION

www.goodmanrealestate.com

216.381.8200

### CLEVELAND

THE OFFICES OF LEGACY VILLAGE  
25333 CEDAR ROAD, SUITE 305  
CLEVELAND, OH 44124

### COLUMBUS

389 E. LIVINGSTON AVENUE  
COLUMBUS, OHIO 43215

## RANDY GOODMAN

randy@goodmanrealestate.com

## ALEX JUSTICE

alex@goodmanrealestate.com

## MAGGIE JONES

maggie@goodmanrealestate.com

THE INFORMATION ABOVE HAS BEEN OBTAINED FROM SOURCES BELIEVED TO BE RELIABLE. GOODMAN REAL ESTATE SERVICES GROUP LLC AND ITS AGENTS, ASSOCIATES, AND EMPLOYEES MAKE NO GUARANTEE, WARRANTY OR REPRESENTATION ABOUT IT. ALL IMAGES CONTAINED HEREIN ARE THE PROPERTY OF GOODMAN REAL ESTATE SERVICES GROUP LLC AND SHALL NOT BE DUPLICATED OR REPRODUCED WITHOUT EXPRESS WRITTEN CONSENT OF GOODMAN REAL ESTATE SERVICES GROUP LLC. YOU ACKNOWLEDGE THAT, AS REQUIRED BY THE STATE OF OHIO, YOU HAVE RECEIVED THE CONSUMER GUIDE TO AGENCY RELATIONSHIPS.





## LEASING INFORMATION

www.goodmanrealestate.com

216.381.8200

**RANDY GOODMAN**

randy@goodmanrealestate.com

**ALEX JUSTICE**

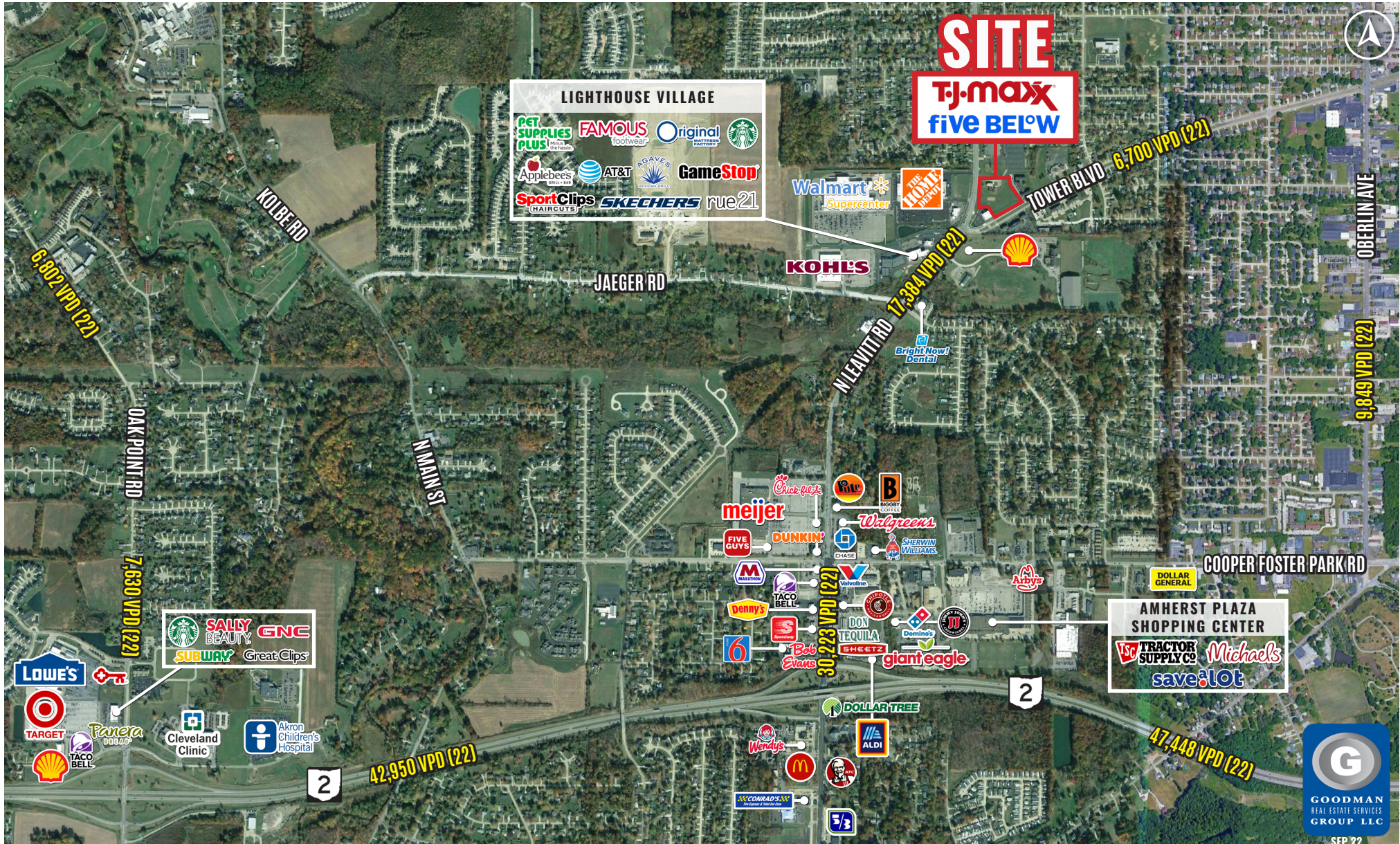
alex@goodmanrealestate.com

**MAGGIE JONES**

maggie@goodmanrealestate.com

# THE SHOPS ON LEAVITT

Lorain, Ohio







# THE SHOPS ON LEAVITT

Lorain, Ohio

|            |           |             |
|------------|-----------|-------------|
| <b>KEY</b> | LEASED    | NEGOTIATING |
|            | AVAILABLE | NOT PART    |

| UNIT         | TENANT     | SIZE (SQ. FT.) |
|--------------|------------|----------------|
| 1            | Five Below | 9,957          |
| 2            | Available  | 14,625         |
| 3            | T.J.Maxx   | 23,000         |
|              |            |                |
|              |            |                |
|              |            |                |
|              |            |                |
| SITE SUMMARY |            | 47,582         |

## LEASING INFORMATION

### RANDY GOODMAN

President

[randy@goodmanrealestate.com](mailto:randy@goodmanrealestate.com)

### ALEX JUSTICE

Sales & Leasing Associate

[alex@goodmanrealestate.com](mailto:alex@goodmanrealestate.com)

### MAGGIE JONES

Sales & Leasing Associate

[maggie@goodmanrealestate.com](mailto:maggie@goodmanrealestate.com)

### CLEVELAND

THE OFFICES OF LEGACY VILLAGE  
25333 CEDAR ROAD, SUITE 305  
CLEVELAND, OH 44124

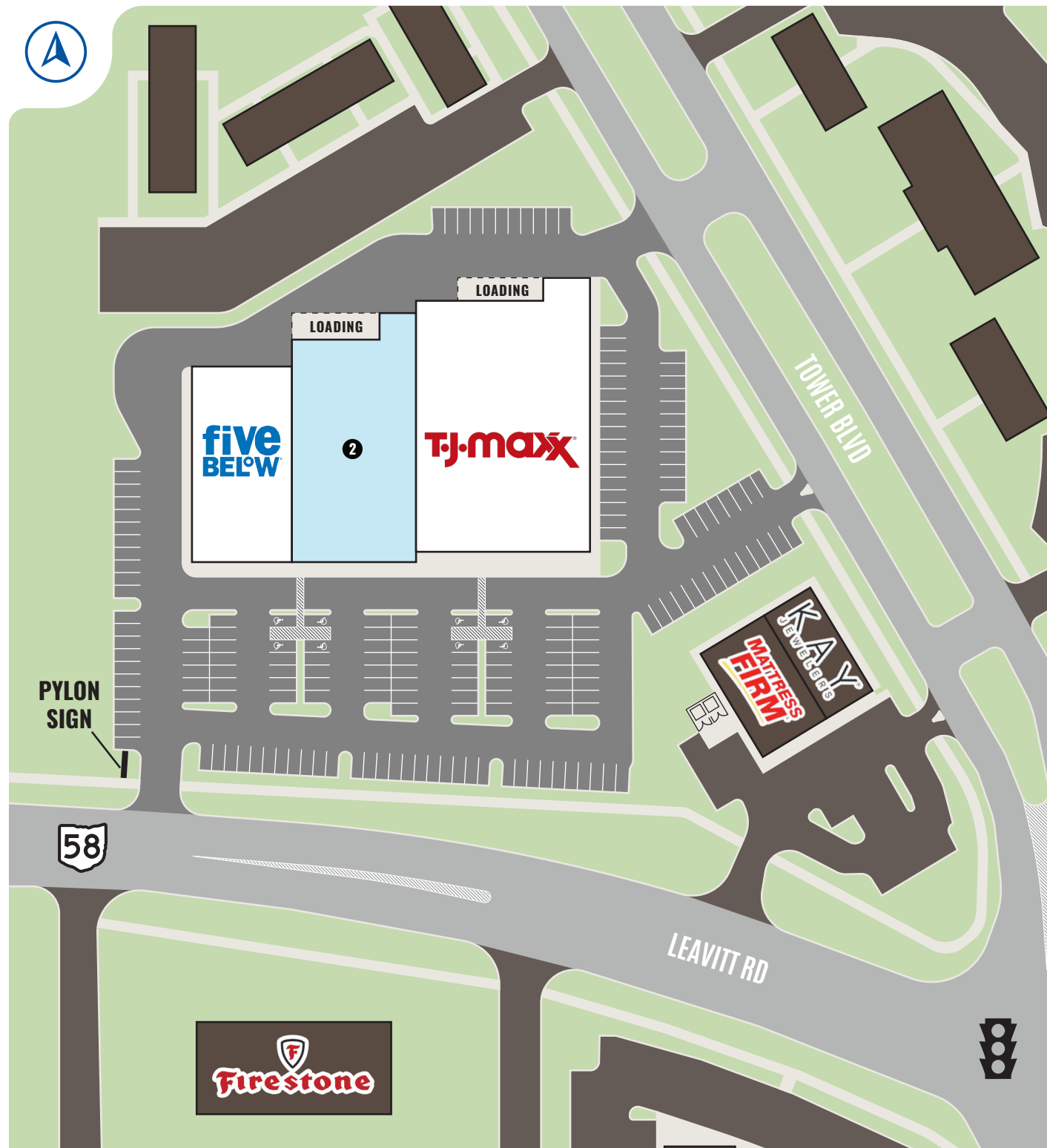
### COLUMBUS

389 E. LIVINGSTON AVENUE  
COLUMBUS, OHIO 43215

P 216.381.8200

F 216.381.8211

[WWW.GOODMANREALESTATE.COM](http://WWW.GOODMANREALESTATE.COM)



THE INFORMATION ABOVE HAS BEEN OBTAINED FROM SOURCES BELIEVED TO BE RELIABLE. GOODMAN REAL ESTATE SERVICES GROUP LLC AND ITS AGENTS, ASSOCIATES, AND EMPLOYEES MAKE NO GUARANTEE, WARRANTY OR REPRESENTATION ABOUT IT. ALL IMAGES CONTAINED HEREIN ARE THE PROPERTY OF GOODMAN REAL ESTATE SERVICES GROUP LLC AND SHALL NOT BE DUPLICATED OR REPRODUCED WITHOUT EXPRESS WRITTEN CONSENT OF GOODMAN REAL ESTATE SERVICES GROUP LLC. YOU ACKNOWLEDGE THAT, AS REQUIRED BY THE STATE OF OHIO, YOU HAVE RECEIVED THE CONSUMER GUIDE TO AGENCY RELATIONSHIPS.