



Another Development By:  
**Thomas English**  
 Retail Real Estate

# THE SHOPS AT HEALTHWAY

Avon, Ohio



## HIGHLIGHTS

- **AVAILABLE:** 1,411 SF
- Now Open: Jersey Mike's and UH Urgent Care
- NEW retail development, with multi-tenant retail building and freestanding Citizens Bank, opening Q4 2024
- Ideal location for restaurants and other high intensity users seeking a drive-thru in Avon
- Situated at a signalized intersection
- Site is located less than a mile from Avon Commons, anchored by Costco, The Home Depot, Target, Kohl's, HomeGoods, and more
- Avon is home to super-regional retail tenants, including Menards, Cabela's, Main Event, Duluth Trading Co, JCPenney, and more

## DEMOGRAPHICS

POPULATION	3 MILE	5 MILE	7 MILE
2029 Projection	37,396	121,638	211,951
2024 Estimate	37,033	119,528	210,356
INCOME	3 MILE	5 MILE	7 MILE
2024 Average	\$124,698	\$112,787	\$101,047
2024 Median	\$104,446	\$85,049	\$75,171
DAYTIME POPULATION	3 MILE	5 MILE	7 MILE
2024 Employees	14,055	37,129	64,626

## LEASING INFORMATION

www.goodmanrealestate.com  
 216.381.8200

### CLEVELAND

THE OFFICES OF LEGACY VILLAGE  
 25333 CEDAR ROAD, SUITE 305  
 CLEVELAND, OH 44124

### COLUMBUS

389 E. LIVINGSTON AVENUE  
 COLUMBUS, OHIO 43215

## ZACK SOGOLOFF

Senior Vice President  
 zack@goodmanrealestate.com

## SETH MARKS

Senior Director  
 seth@goodmanrealestate.com





# LEASING INFORMATION

www.goodmanrealestate.com

216.381.8200

## ZACK SOGOLOFF

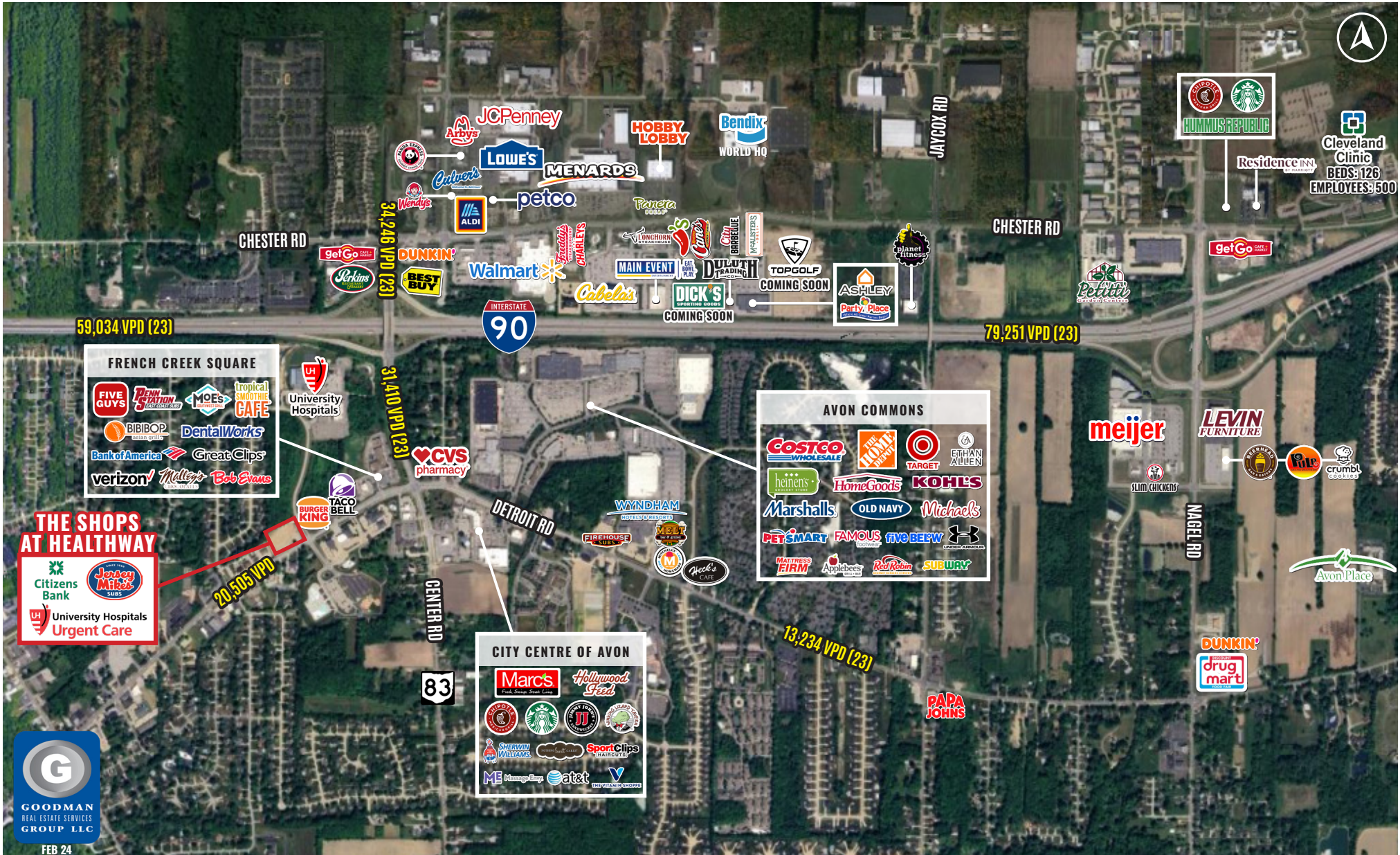
Senior Vice President  
zack@goodmanrealestate.com

## SETH MARKS

Senior Director  
seth@goodmanrealestate.com

# THE SHOPS AT HEALTHWAY

## Avon, Ohio



FEB 24





# THE SHOPS AT HEALTHWAY

Avon, Ohio

## LEASING INFORMATION

P 216.381.8200  
F 216.381.8211

[WWW.GOODMANREALESTATE.COM](http://WWW.GOODMANREALESTATE.COM)

### CLEVELAND

THE OFFICES OF LEGACY VILLAGE  
25333 CEDAR ROAD, SUITE 305  
CLEVELAND, OH 44124

### COLUMBUS

389 E. LIVINGSTON AVENUE  
COLUMBUS, OHIO 43215

### ZACK SOGOLOFF

Senior Vice President  
zack@goodmanrealestate.com

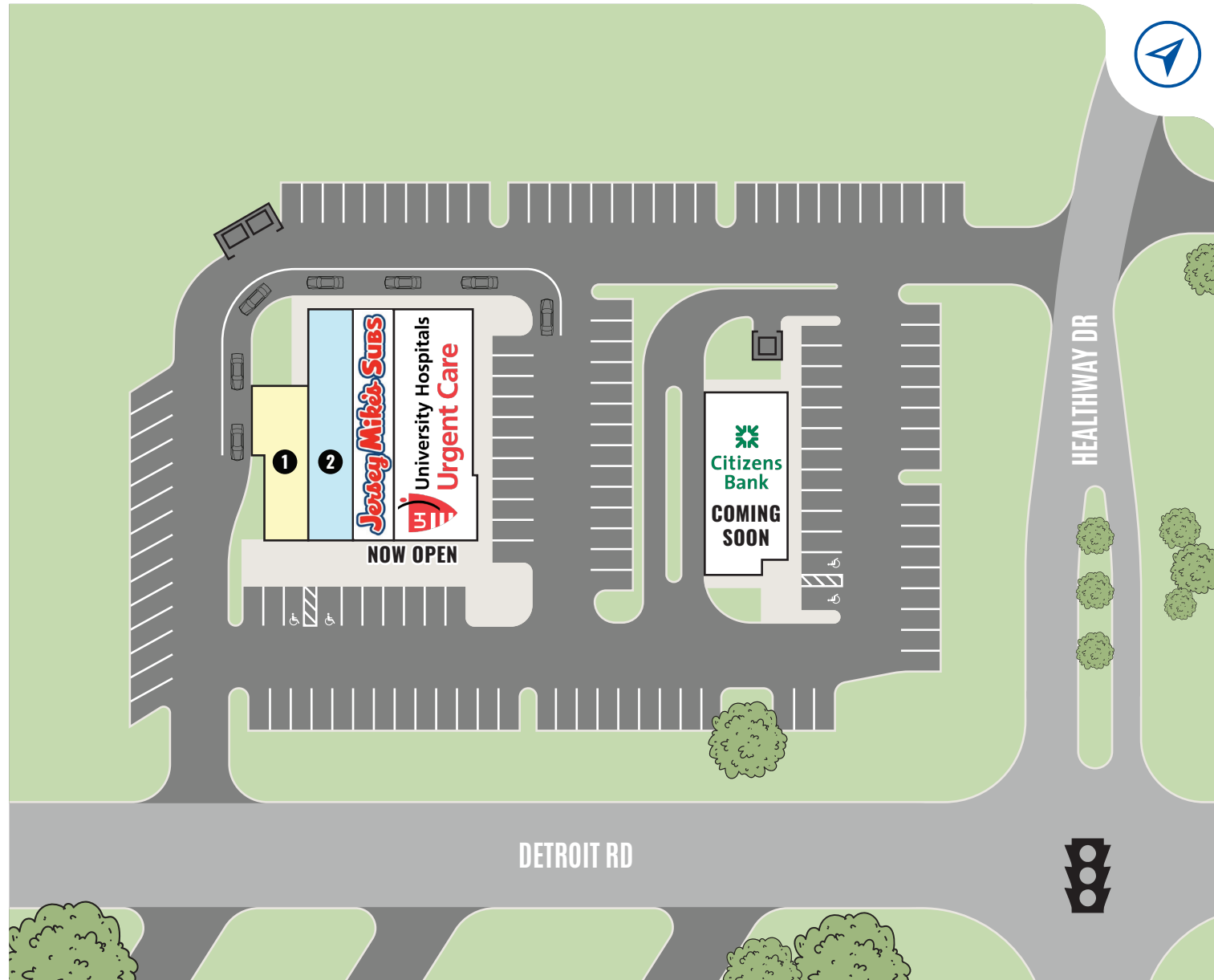
### SETH MARKS

Senior Director  
seth@goodmanrealestate.com

KEY	LEASED	NEGOTIATING
	AVAILABLE	NOT PART

UNIT	TENANT	SIZE (SQ. FT.)
1	Negotiating	1,859
2	Available	1,441
3	Jersey Mike's	1,800
4	University Hospitals Urgent Care	3,500
5	Citizens Bank	2,700

SITE SUMMARY 11,300



THE INFORMATION ABOVE HAS BEEN OBTAINED FROM SOURCES BELIEVED TO BE RELIABLE. GOODMAN REAL ESTATE SERVICES GROUP LLC AND ITS AGENTS, ASSOCIATES, AND EMPLOYEES MAKE NO GUARANTEE, WARRANTY OR REPRESENTATION ABOUT IT. ALL IMAGES CONTAINED HEREIN ARE THE PROPERTY OF GOODMAN REAL ESTATE SERVICES GROUP LLC AND SHALL NOT BE DUPLICATED OR REPRODUCED WITHOUT EXPRESS WRITTEN CONSENT OF GOODMAN REAL ESTATE SERVICES GROUP LLC. YOU ACKNOWLEDGE THAT, AS REQUIRED BY THE STATE OF OHIO, YOU HAVE RECEIVED THE CONSUMER GUIDE TO AGENCY RELATIONSHIPS.





## LEASING INFORMATION

www.goodmanrealestate.com

216.381.8200

### ZACK SOGOLOFF

Senior Vice President  
zack@goodmanrealestate.com

### SETH MARKS

Senior Director  
seth@goodmanrealestate.com

# THE SHOPS AT HEALTHWAY

## Avon, Ohio

