



WWW.GOODMANREALESTATE.COM
216.381.8200

TUSCARAWAS WHIPPLE REDEVELOPMENT

Canton, Ohio



HIGHLIGHTS

- **AVAILABLE:** 0.9 to 2.2 AC (divisible) adjacent to future Chick-fil-A
- Redevelopment opportunity at former Fishers Foods
- One of Stark County's most dynamic intersections!
- Ground lease opportunity – one or two freestanding development sites
- Existing 45,000 SF that can be cut back to 20,000 to 30,000 SF useable

DEMOGRAPHICS

POPULATION	3 MILE	5 MILE	7 MILE
2029 Projection	64,449	148,230	220,535
2024 Estimate	65,759	150,684	223,122
INCOME	3 MILE	5 MILE	7 MILE
2024 Average	\$59,218	\$62,705	\$68,656
2024 Median	\$45,496	\$47,017	\$51,114
DAYTIME POPULATION	3 MILE	5 MILE	7 MILE
2024 Employees	38,703	72,128	98,008

LEASING INFORMATION

www.goodmanrealestate.com
216.381.8200

CLEVELAND

THE OFFICES OF LEGACY VILLAGE
25333 CEDAR ROAD, SUITE 305
CLEVELAND, OH 44124

COLUMBUS

389 E. LIVINGSTON AVENUE
COLUMBUS, OHIO 43215

DANNY POPOV

Sales Associate

danny@goodmanrealestate.com



LEASING INFORMATION

www.goodmanrealestate.com

216.381.8200

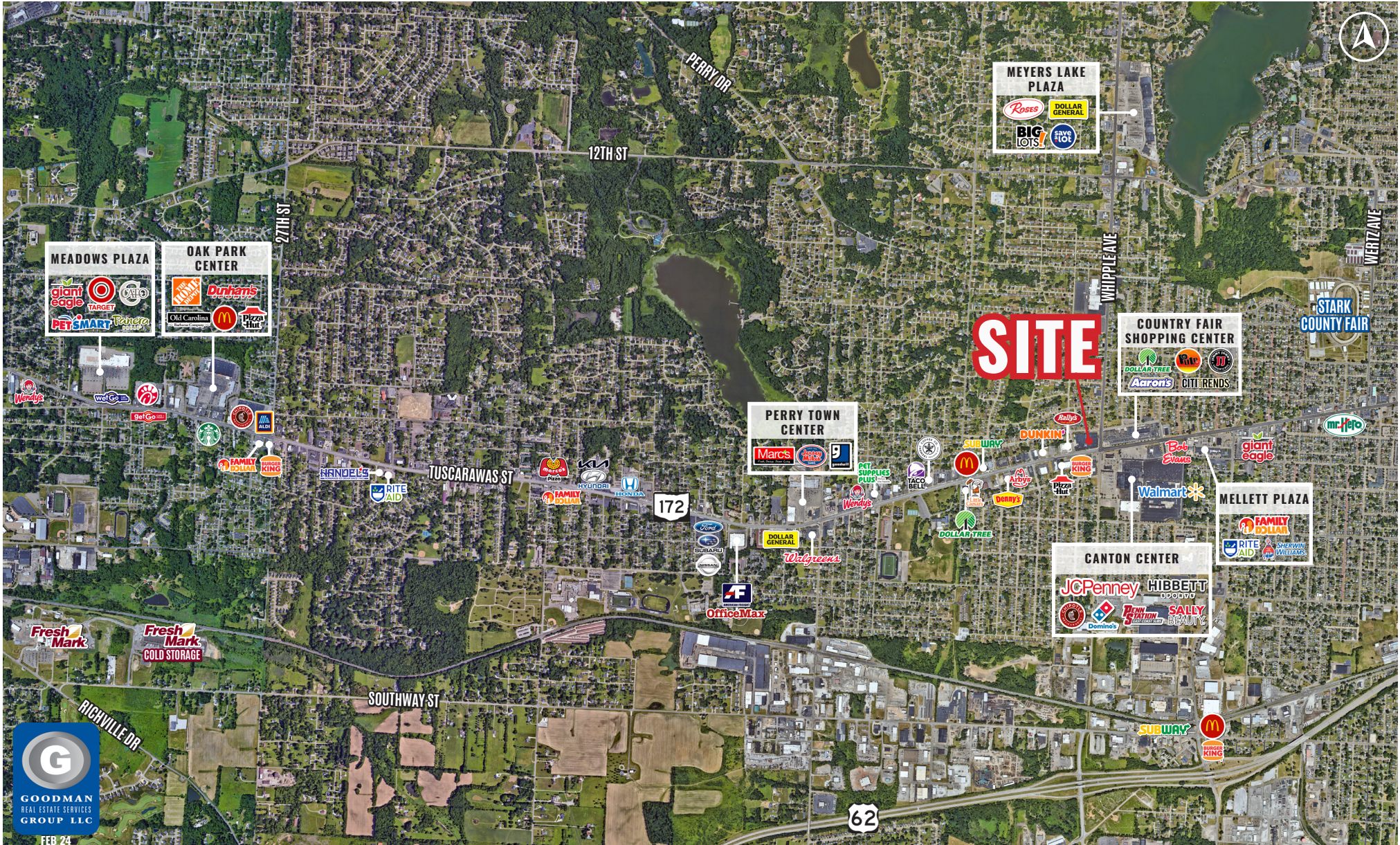
DANNY POPOV

Sales Associate

danny@goodmanrealestate.com

TUSCARAWAS WHIPPLE REDEVELOPMENT

Canton, Ohio



FEB 24

THE INFORMATION ABOVE HAS BEEN OBTAINED FROM SOURCES BELIEVED TO BE RELIABLE. GOODMAN REAL ESTATE SERVICES GROUP LLC AND ITS AGENTS, ASSOCIATES, AND EMPLOYEES MAKE NO GUARANTEE, WARRANTY OR REPRESENTATION ABOUT IT. ALL IMAGES CONTAINED HEREIN ARE THE PROPERTY OF GOODMAN REAL ESTATE SERVICES GROUP LLC AND SHALL NOT BE DUPLICATED OR REPRODUCED WITHOUT EXPRESS WRITTEN CONSENT OF GOODMAN REAL ESTATE SERVICES GROUP LLC. YOU ACKNOWLEDGE THAT, AS REQUIRED BY THE STATE OF OHIO, YOU HAVE RECEIVED THE CONSUMER GUIDE TO AGENCY RELATIONSHIPS.



LEASING INFORMATION

www.goodmanrealestate.com

216.381.8200

DANNY POPOV

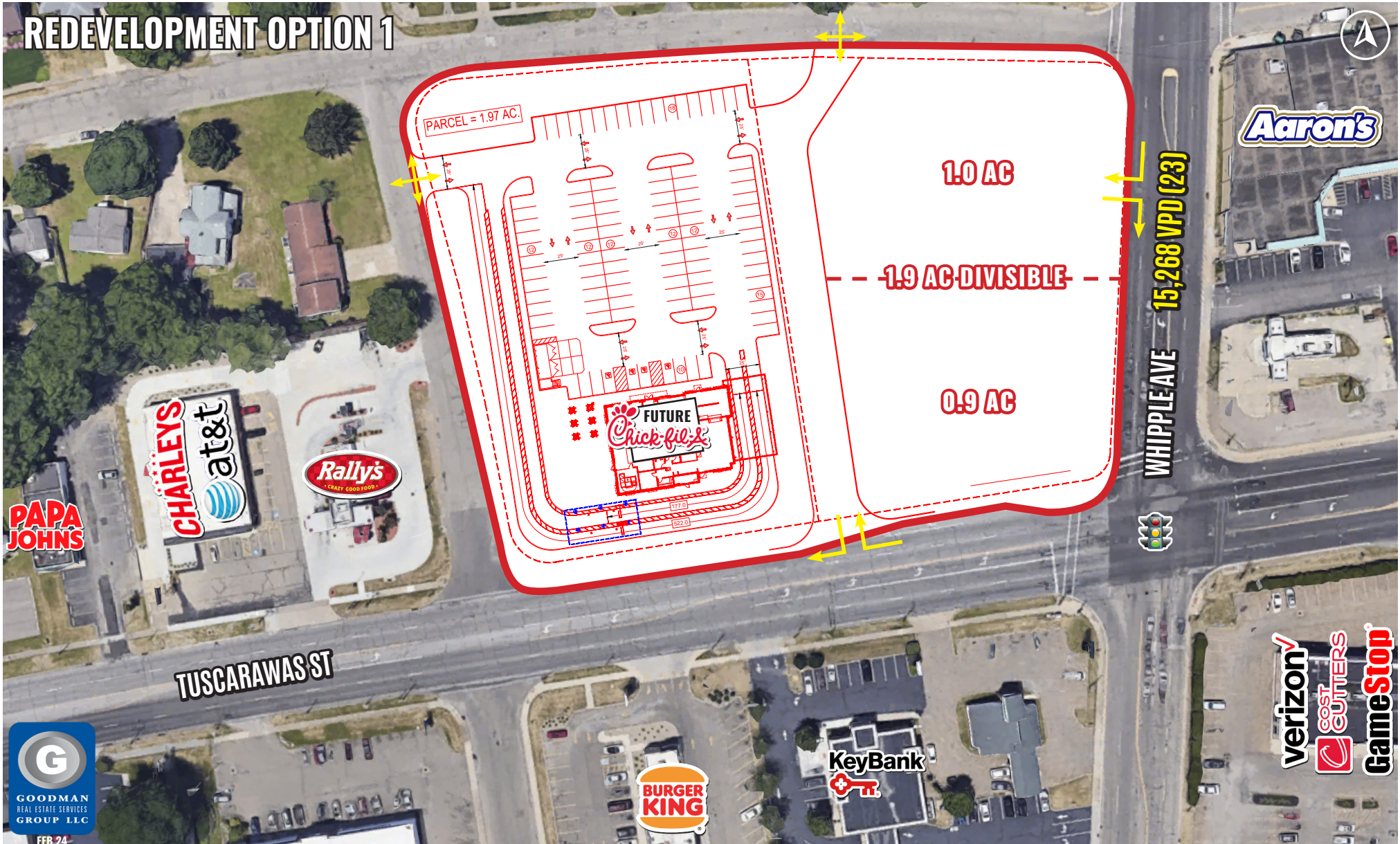
Sales Associate

danny@goodmanrealestate.com

TUSCARAWAS WHIPPLE REDEVELOPMENT

Canton, Ohio

REDEVELOPMENT OPTION 1



FEB 24



LEASING INFORMATION

www.goodmanrealestate.com

216.381.8200

DANNY POPOV

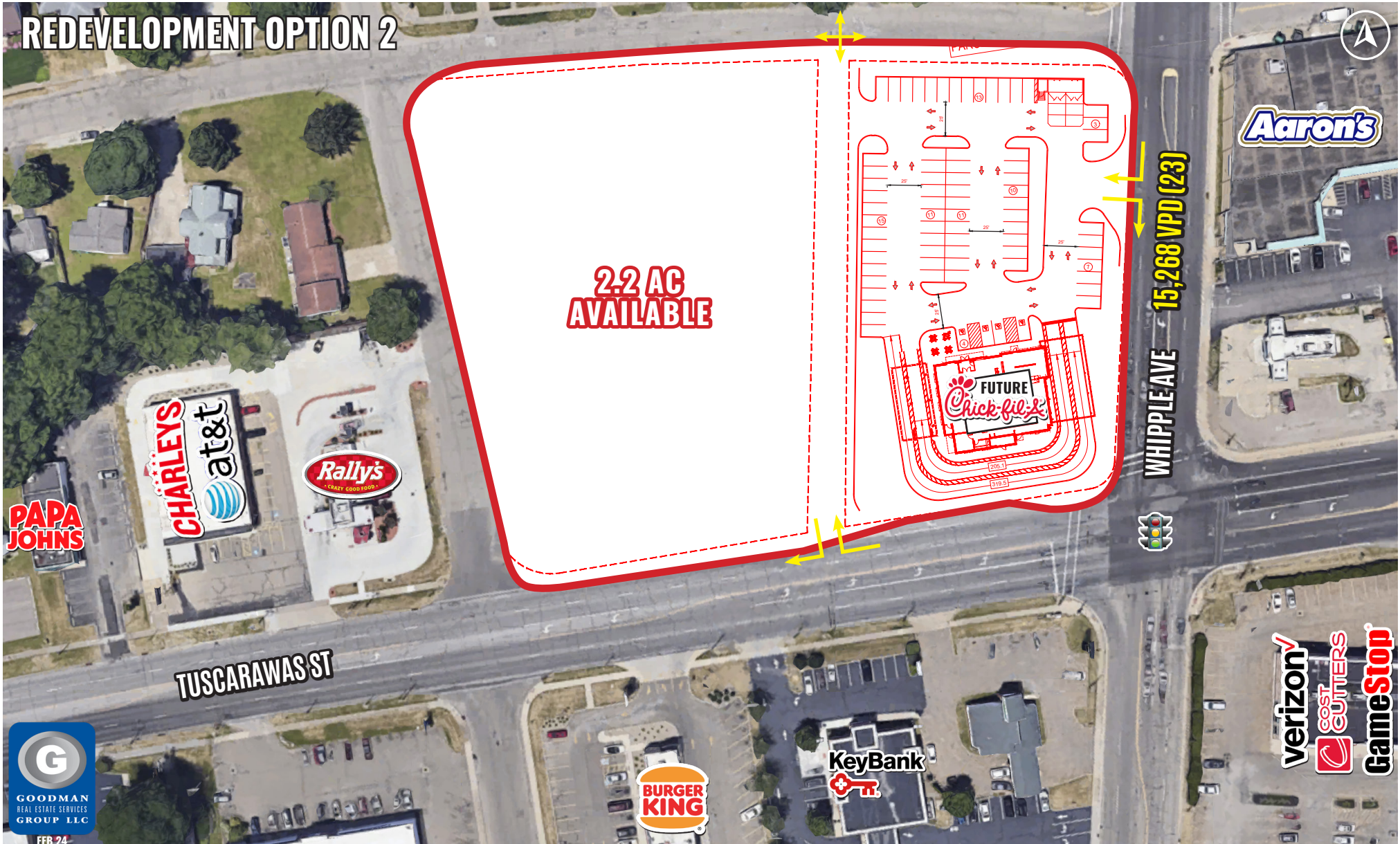
Sales Associate

danny@goodmanrealestate.com

TUSCARAWAS WHIPPLE REDEVELOPMENT

Canton, Ohio

REDEVELOPMENT OPTION 2



FEB 24