



WWW.GOODMANREALESTATE.COM
216.381.8200

YARMOUTH CROSSING

Pickerington, Ohio



HIGHLIGHTS

- **AVAILABLE:** 0.565 AC for sale or lease
- Corner location with signalized access
- Easy access to Interstate 70 (98,864 VPD)
- In the heart of a super-regional trade area serving Reynoldsburg, Blacklick, Pataskala, Etna, and Pickerington
- Nearby nationally branded retailers include Ulta Beauty, Barnes & Noble, Marcus Theatres, Five Below, Party City, and more

DEMOGRAPHICS

POPULATION	3 MILE	5 MILE	7 MILE
2029 Projection	88,761	208,732	310,994
2024 Estimate	85,303	201,061	300,864
INCOME	3 MILE	5 MILE	7 MILE
2024 Average	\$84,397	\$82,548	\$80,375
2024 Median	\$67,686	\$66,210	\$63,987
DAYTIME POPULATION	3 MILE	5 MILE	7 MILE
2024 Employees	18,968	38,886	81,785

LEASING INFORMATION

www.goodmanrealestate.com
216.381.8200

CLEVELAND

THE OFFICES OF LEGACY VILLAGE
25333 CEDAR ROAD, SUITE 305
CLEVELAND, OH 44124

COLUMBUS

389 E. LIVINGSTON AVENUE
COLUMBUS, OHIO 43215

DANIEL CLARK

VP and Manager, Columbus Office
daniel@goodmanrealestate.com

JOE BELINSKE

Sales Associate, Columbus Office
joe@goodmanrealestate.com



LEASING INFORMATION

www.goodmanrealestate.com

216.381.8200

DANIEL CLARK

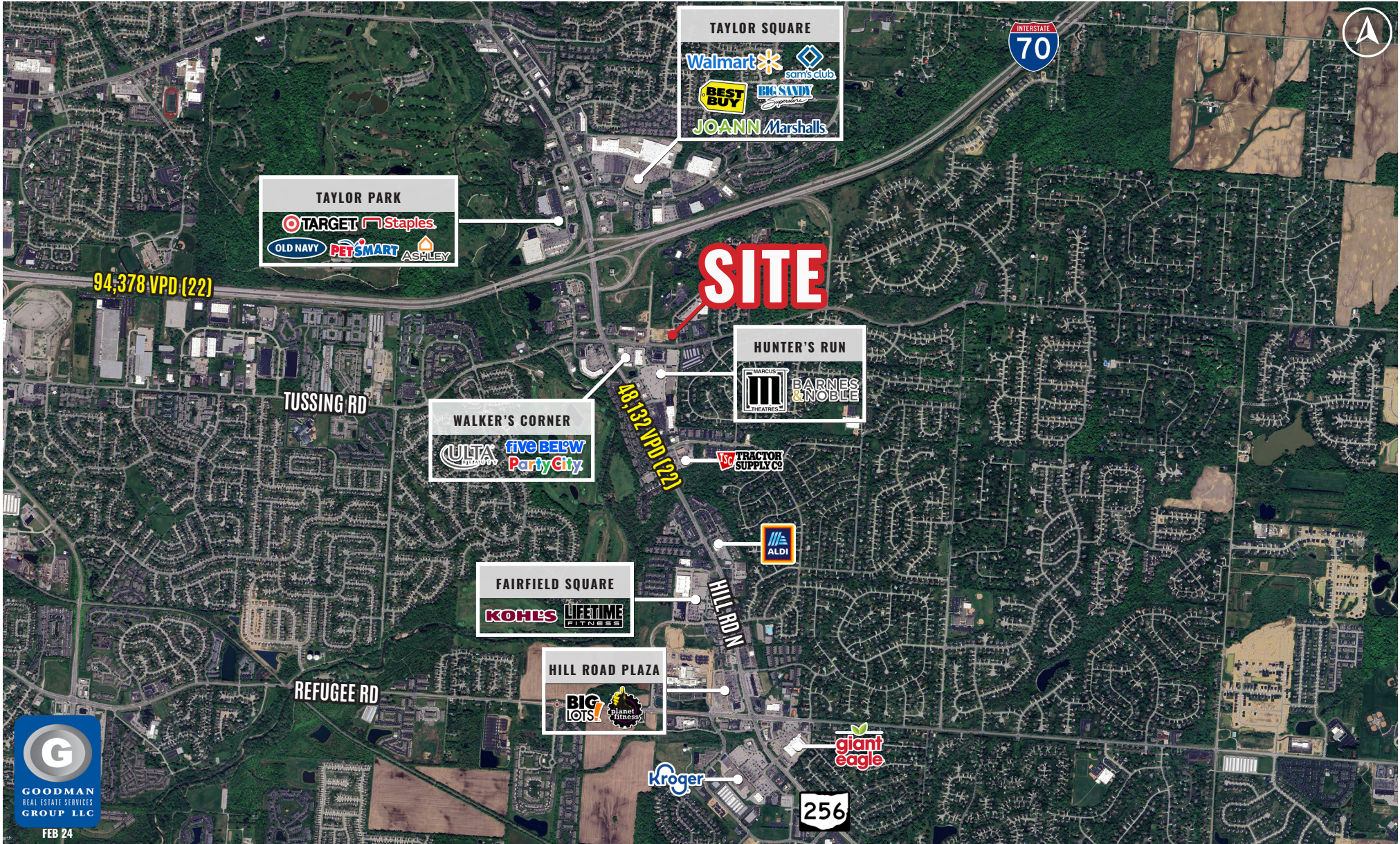
VP and Manager, Columbus Office
daniel@goodmanrealestate.com

JOE BELINSKE

Sales Associate, Columbus Office
joe@goodmanrealestate.com

YARMOUTH CROSSING

Pickerington, Ohio



FEB 24



YARMOUTH CROSSING

Pickerington, Ohio

LEASING INFORMATION

P 216.381.8200
F 216.381.8211

WWW.GOODMANREALESTATE.COM

CLEVELAND

THE OFFICES OF LEGACY VILLAGE
25333 CEDAR ROAD, SUITE 305
CLEVELAND, OH 44124

COLUMBUS

389 E. LIVINGSTON AVENUE
COLUMBUS, OHIO 43215

DANIEL CLARK

VP and Manager, Columbus Office
daniel@goodmanrealestate.com

JOE BELINSKE

Sales Associate, Columbus Office
joe@goodmanrealestate.com



FREEDOM WAY N



0.565± AC AVAILABLE

YARMOUTH RD

BLACKLICK EASTERN RD NW

