



WWW.GOODMANREALESTATE.COM  
216.381.8200

# GATEWAY CROSSING

Jerome Township, Ohio



## HIGHLIGHTS

- New shopping center coming Fall 2027, adjacent to Costco, ALDI, T.J. Maxx, HomeGoods, and PetSmart
- Over 6,000 new single and multifamily residences in planning and under construction within close proximity to development
- Anchor and Junior Anchor positions available
- Less than ¼ mile from 100-acre SportsOhio sports complex, Columbus State Community College's Dublin Campus, and Ohio University Heritage College of Osteopathic Medicine

## DEMOGRAPHICS

POPULATION	3 MILE	5 MILE	7 MILE
2030 Projection	28,956	106,899	216,317
2025 Estimate	27,961	102,015	207,867
INCOME	3 MILE	5 MILE	7 MILE
2025 Average	\$187,280	\$167,905	\$149,911
2025 Median	\$150,882	\$125,732	\$114,764
DAYTIME POPULATION	3 MILE	5 MILE	7 MILE
2025 Employees	951	2,921	5,631

## LEASING INFORMATION

www.goodmanrealestate.com  
216.381.8200

### CLEVELAND

THE OFFICES OF LEGACY VILLAGE  
25333 CEDAR ROAD, SUITE 305  
CLEVELAND, OH 44124

### COLUMBUS

100 W OLD WILSON BRIDGE ROAD,  
SUITE 207  
WORTHINGTON, OH 43085

## DANIEL CLARK

EVP | Director of the Columbus Office  
daniel@goodmanrealestate.com

## JOE BELINSKE

Sales Associate, Columbus Office  
joe@goodmanrealestate.com





## LEASING INFORMATION

www.goodmanrealestate.com

216.381.8200

### DANIEL CLARK

EVP | Director of the Columbus Office

daniel@goodmanrealestate.com

### JOE BELINSKE

Sales Associate, Columbus Office

joe@goodmanrealestate.com

# GATEWAY CROSSING

Jerome Township, Ohio

CLICK HERE FOR  
DRONE VIDEO



**PROPOSED**  
2.5 MILLION SF  
3 HOTELS  
1,200 RESIDENTIAL UNITS  
600,000 SF OFFICE SPACE



NOV 25

THE INFORMATION ABOVE HAS BEEN OBTAINED FROM SOURCES BELIEVED TO BE RELIABLE. GOODMAN REAL ESTATE SERVICES GROUP LLC AND ITS AGENTS, ASSOCIATES, AND EMPLOYEES MAKE NO GUARANTEE, WARRANTY OR REPRESENTATION ABOUT IT. ALL IMAGES CONTAINED HEREIN ARE THE PROPERTY OF GOODMAN REAL ESTATE SERVICES GROUP LLC AND SHALL NOT BE DUPLICATED OR REPRODUCED WITHOUT EXPRESS WRITTEN CONSENT OF GOODMAN REAL ESTATE SERVICES GROUP LLC. YOU ACKNOWLEDGE THAT, AS REQUIRED BY THE STATE OF OHIO, YOU HAVE RECEIVED THE CONSUMER GUIDE TO AGENCY RELATIONSHIPS.





## LEASING INFORMATION

www.goodmanrealestate.com

216.381.8200

### DANIEL CLARK

EVP | Director of the Columbus Office

daniel@goodmanrealestate.com

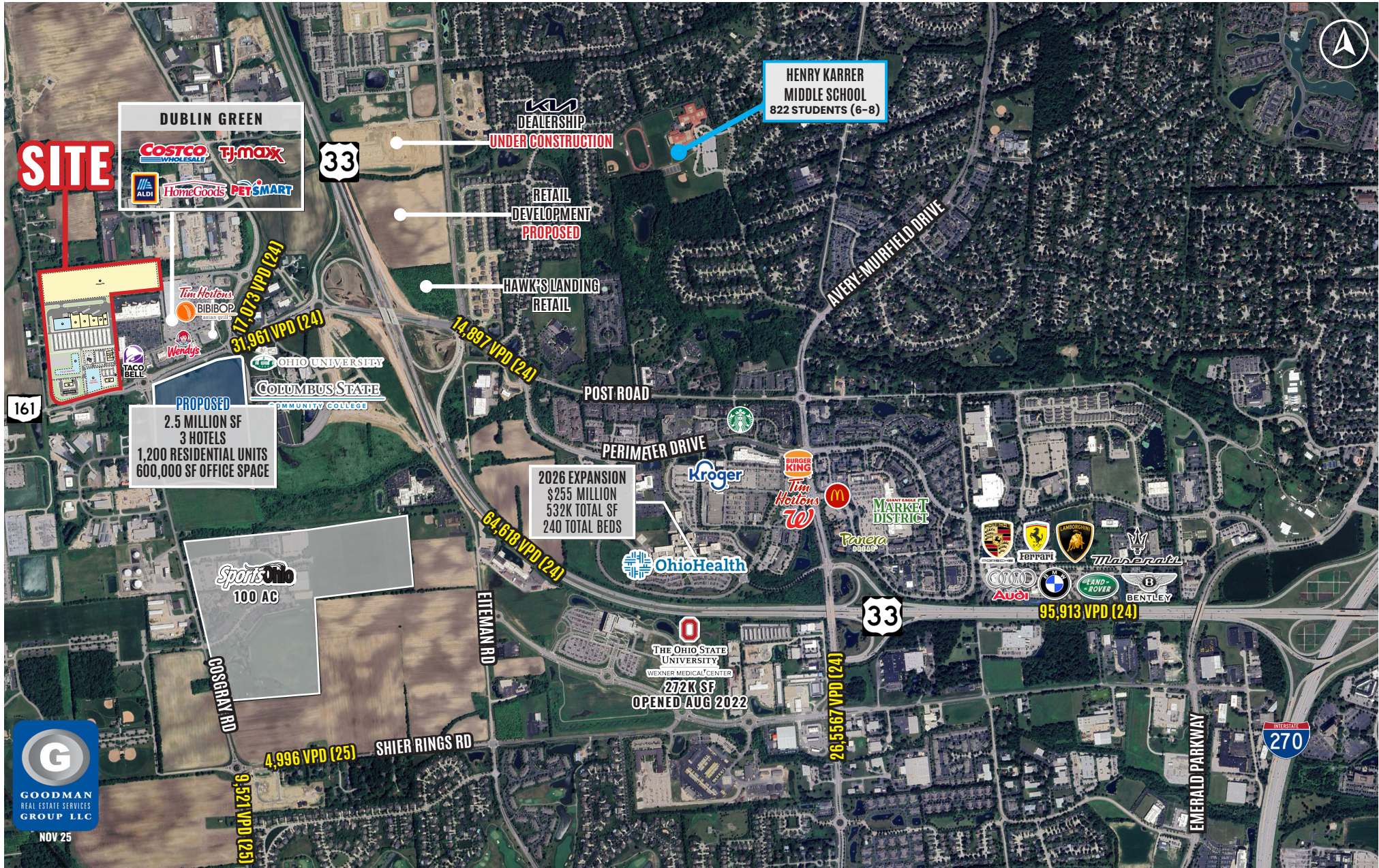
### JOE BELINSKE

Sales Associate, Columbus Office

joe@goodmanrealestate.com

# GATEWAY CROSSING

## Jerome Township, Ohio



THE INFORMATION ABOVE HAS BEEN OBTAINED FROM SOURCES BELIEVED TO BE RELIABLE. GOODMAN REAL ESTATE SERVICES GROUP LLC AND ITS AGENTS, ASSOCIATES, AND EMPLOYEES MAKE NO GUARANTEE, WARRANTY OR REPRESENTATION ABOUT IT. ALL IMAGES CONTAINED HEREIN ARE THE PROPERTY OF GOODMAN REAL ESTATE SERVICES GROUP LLC AND SHALL NOT BE DUPLICATED OR REPRODUCED WITHOUT EXPRESS WRITTEN CONSENT OF GOODMAN REAL ESTATE SERVICES GROUP LLC. YOU ACKNOWLEDGE THAT, AS REQUIRED BY THE STATE OF OHIO, YOU HAVE RECEIVED THE CONSUMER GUIDE TO AGENCY RELATIONSHIPS.





**Sales Associate, Columbus Office**  
joe@goodmanrealestate.com

# Jerome Township, Ohio

NOV 25





# GATEWAY CROSSING

Jerome Township, Ohio

## KEY

	LEASED		NEGOTIATING
	AVAILABLE		NOT PART

UNIT	TENANT	SIZE (SQ. FT.)
1	Negotiating	17.2 AC
2	Available	Up To 40,000
3	Negotiating	24,890
4	Negotiating	24,681
5	Negotiating	18,000
6	Negotiating	8,750
7	Negotiating	8,470
8	Available	2.45 AC
9	Available	0.75 AC
10	Negotiating	1.57 AC
11	Negotiating	2.5 AC
12	Available	1.39 AC
13	Negotiating	1.49 AC

## LEASING INFORMATION

### DANIEL CLARK

EVP and Director of the Columbus Office

daniel@goodmanrealestate.com

### JOE BELINSKE

Sales Associate, Columbus Office

joe@goodmanrealestate.com

### CLEVELAND

THE OFFICES OF LEGACY VILLAGE  
25333 CEDAR ROAD, SUITE 305  
CLEVELAND, OH 44124

### COLUMBUS

100 W OLD WILSON BRIDGE ROAD,  
SUITE 207  
WORTHINGTON, OHIO 43085

P 216.381.8200 F 216.381.8211

[WWW.GOODMANREALESTATE.COM](http://WWW.GOODMANREALESTATE.COM)



THE INFORMATION ABOVE HAS BEEN OBTAINED FROM SOURCES BELIEVED TO BE RELIABLE. GOODMAN REAL ESTATE SERVICES GROUP LLC AND ITS AGENTS, ASSOCIATES, AND EMPLOYEES MAKE NO GUARANTEE, WARRANTY OR REPRESENTATION ABOUT IT. ALL IMAGES CONTAINED HEREIN ARE THE PROPERTY OF GOODMAN REAL ESTATE SERVICES GROUP LLC AND SHALL NOT BE DUPLICATED OR REPRODUCED WITHOUT EXPRESS WRITTEN CONSENT OF GOODMAN REAL ESTATE SERVICES GROUP LLC. YOU ACKNOWLEDGE THAT, AS REQUIRED BY THE STATE OF OHIO, YOU HAVE RECEIVED THE CONSUMER GUIDE TO AGENCY RELATIONSHIPS.