

# 200 PUBLIC CLEVELAND

- 200 Public Square, Cleveland, OH
- Built in 1985
- 45 Floors; 1.2 Million SF
- Class A Trophy Property
- Located in Cleveland's Central Business District
- 36 High-Speed Elevators
- Attached 750+ Car Parking Garage
- Wired Certified Gold Internet
- 24-Hour Manned Security; Closed Circuit Cameras

**12,272 SF  
RESTAURANT  
FOR LEASE**

## ICONIC PUBLIC SQUARE RESTAURANT OPPORTUNITY

Cleveland, Ohio



**ZACK SOGOLOFF**

Executive Vice President

[zack@goodmanrealestate.com](mailto:zack@goodmanrealestate.com)

**TRISTAN PALMIERI**

Sales Associate

[tristan@goodmanrealestate.com](mailto:tristan@goodmanrealestate.com)

216.381.8200 | [www.goodmanrealestate.com](http://www.goodmanrealestate.com)

# HIGHLIGHTS



- Cleveland has a metro population of approximately 2.18 million and ranks as the 2nd largest city in Ohio. Northeast Ohio refers to a similar but substantially larger region that is home to over 4.5 million residents.
- Travel and Leisure magazine gives some love to Cleveland as one of the nation's best food cities for travelers, as well as one of the top 50 best places to travel in 2024.
- Over 80,000 students attend Northeast Ohio colleges and universities.
- Access to the largest number of consumers in a 250-mile radius compared with any other metro market in the United States.

## CLEVELAND AREA LARGEST EMPLOYERS

COMPANY	OHIO-BASED EMPLOYEES
Cleveland Clinic Foundation	56,986
University Hospitals	30,891
Progressive Corporation	13,236
MetroHealth System	8,825
KeyCorp	6,777
Marc Glassman, Inc. (Marc's)	6,550
Cleveland Cliffs	6,242
Sherwin Williams	6,211
Goodyear Tire & Rubber	4,800
Swagelok	4,800
NASA Glenn Research Center	3,282

# HIGHLIGHTS



## PUBLIC SQUARE

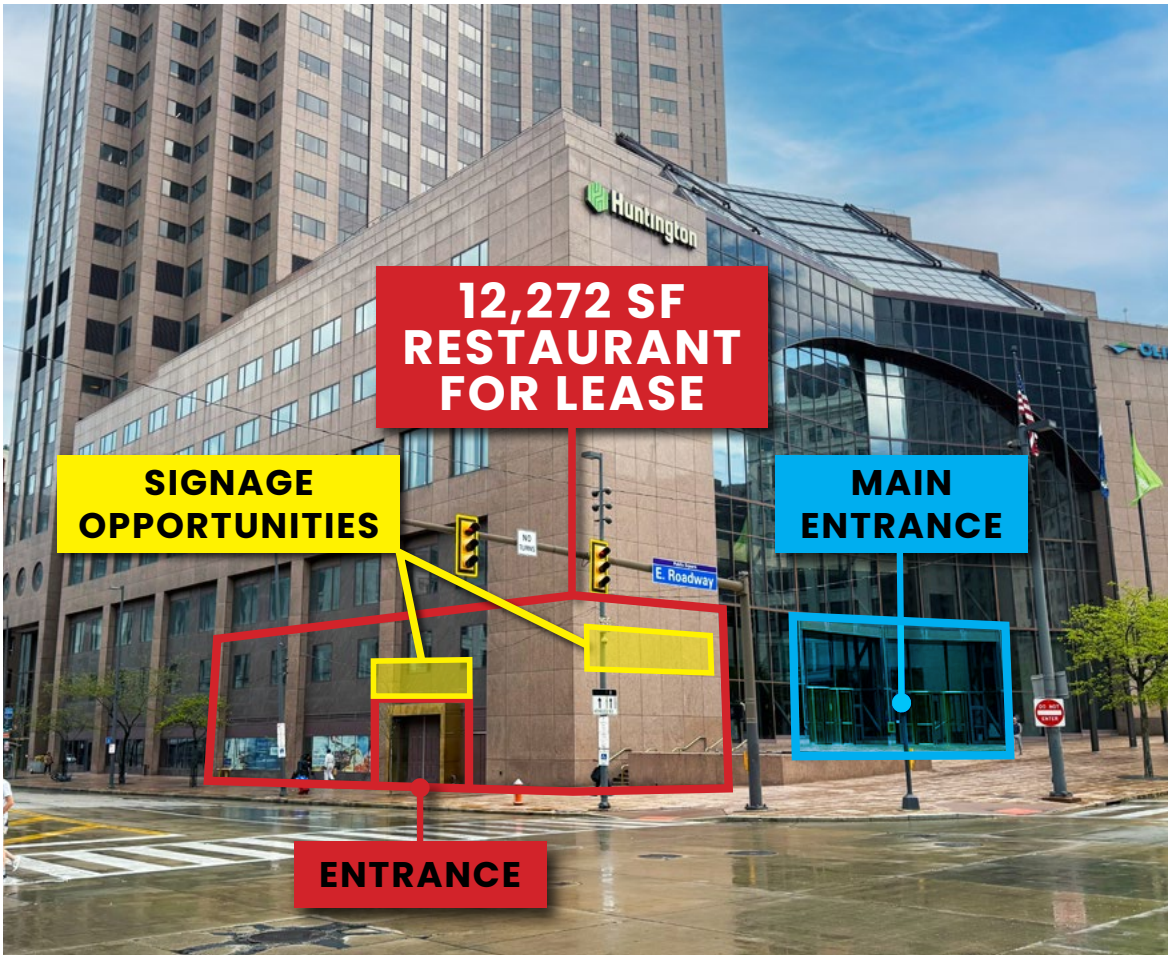
Public Square is a 10-AC park in the heart of Downtown Cleveland. This central gathering spot features an expansive lawn, splash pad, café, the Soldiers' and Sailors' Monument, and more.\*

- Home to the new 1 Million SF Sherwin Williams Global Headquarters with 3,100+ employees
- The surrounding restaurants include Acqua di Dea, Blue Point Grille, Butcher and the Brewer, Cordelia, Fahrenheit, Il Venetian, Marble Room Steaks and Raw Bar, Mabel's BBQ, Morton's The Steakhouse, and RED the Steakhouse
- Steps from Rocket Arena, Progressive Field, JACK Cleveland Casino, Tower City Center, and Huntington Convention Center of Cleveland
- High foot traffic from workers, hotel guests, residents, and tourists
- A ride share away from the Warehouse District, Flats East Bank, Flats West Bank, Scranton Peninsula, and Playhouse Square District
- Over 100,000 daily daytime workers in the downtown core

\*[www.clevelandpublicsquare.com](http://www.clevelandpublicsquare.com)

## THE CENTRAL GATHERING SPOT OF DOWNTOWN CLEVELAND

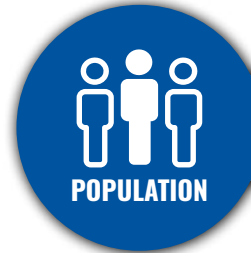
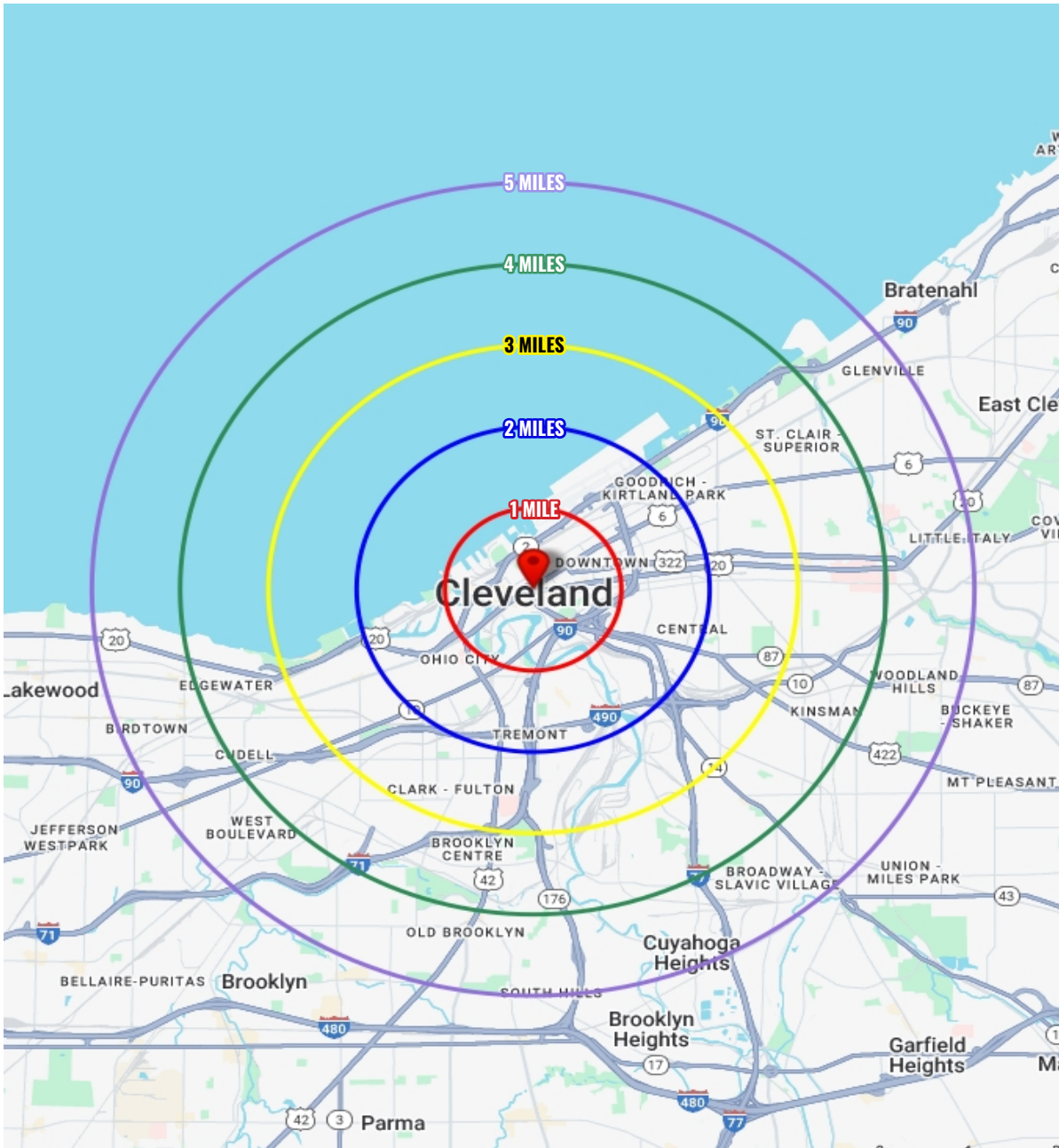
# HIGHLIGHTS



- **AVAILABLE:** 12,272 SF multi-story restaurant
- Situated at the corner of Public Square and Superior Avenue with strong visibility and excellent signage opportunities
- Exceptional restaurant opportunity at the iconic 200 Public Square building, a landmark Class A tower in Downtown Cleveland
- Large lobby and receiving area with elevator adjacent to upscale Cleveland-themed bar and lounge on the first floor, three formal dining rooms on the second floor, and a mezzanine private dining area
- Ample restrooms
- Existing FF&E to remain as pictured
- Expansive 2,976 SF fully-stocked kitchen; all equipment to remain as pictured, including massive hood



# DEMOGRAPHICS



1 MILE	3 MILES	5 MILES
16,255	80,696	233,573



1 MILE	3 MILES	5 MILES
44,185	94,881	253,817



1 MILE	3 MILES	5 MILES
9,594	39,007	107,021



1 MILE	3 MILES	5 MILES
\$100,959	\$76,774	\$64,841

# INTERIOR PHOTOS



# INTERIOR PHOTOS



# INTERIOR PHOTOS



# KITCHEN PHOTOS

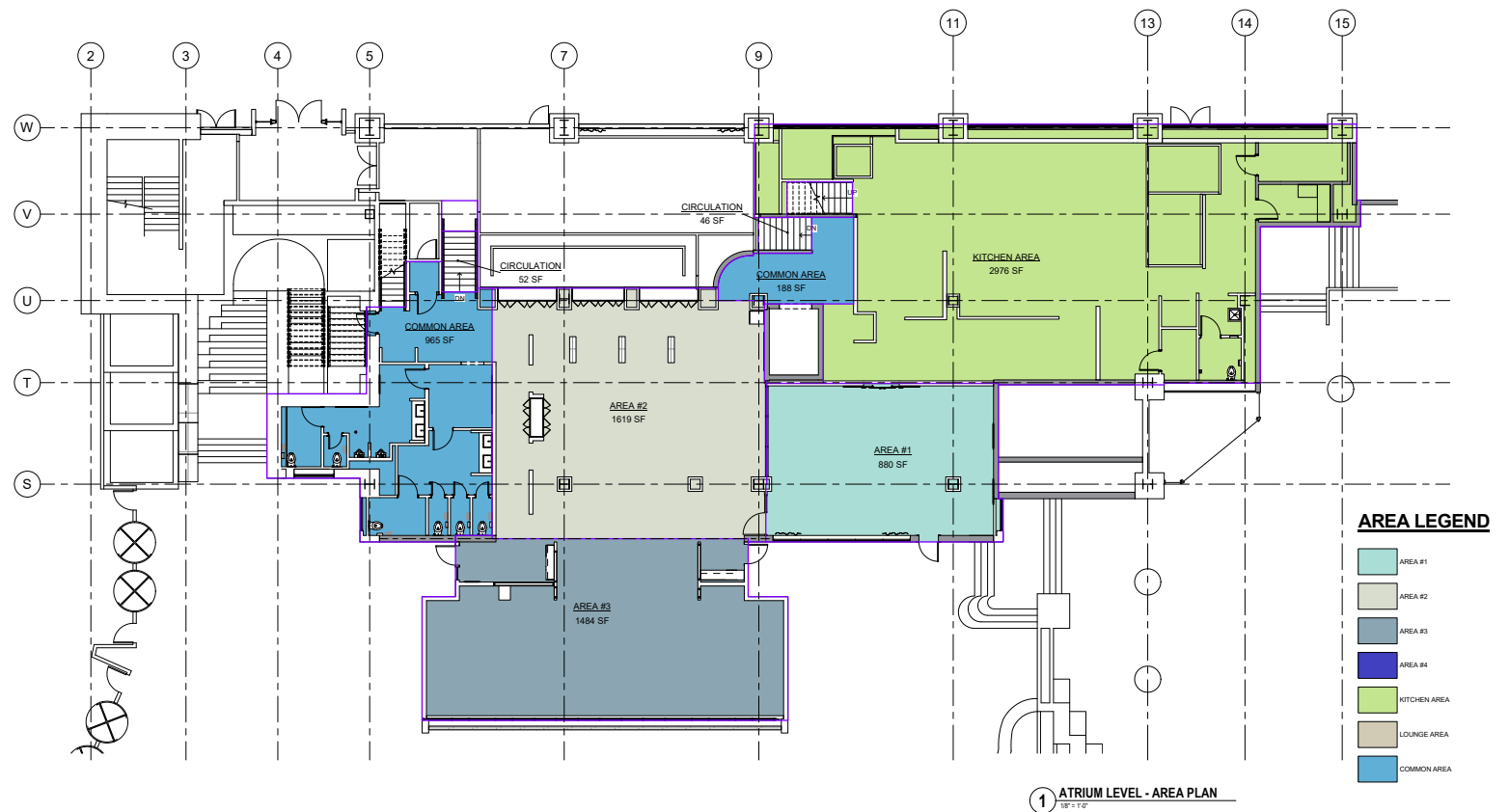
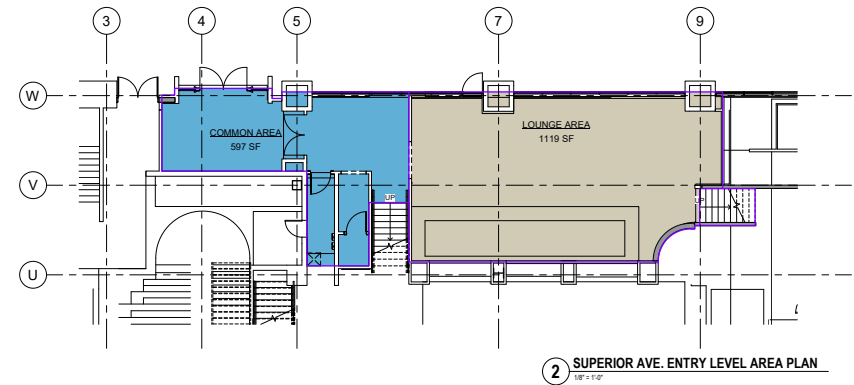
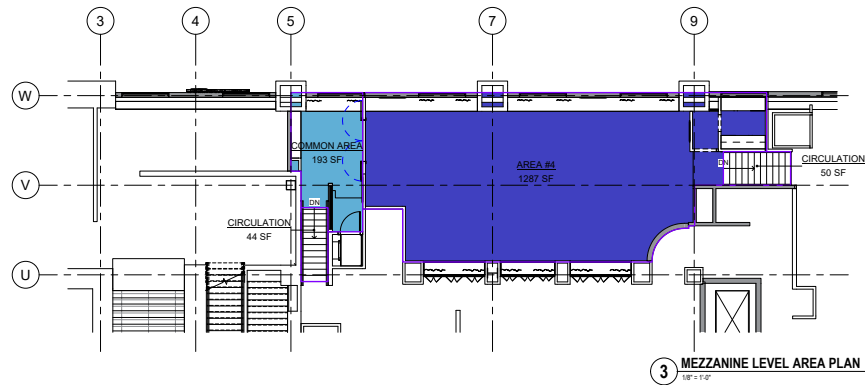


[illegible]

# SITE



# SITE PLAN



## AREA LEGEND



## GOODMAN REAL ESTATE SERVICES GROUP

Goodman Real Estate Services Group is a commercial real estate brokerage specializing in tenant and buyer representation, property marketing and investment sales nationwide. We have grown since 1998 to be a Midwest market leader in commercial real estate services, specializing in retail. Goodman Real Estate Services Group is also the Northern Ohio partner of ChainLinks Retail Advisors, the nation's leading retail-focused real estate services and commercial property brokerage organization.

### FOR LEASING INFORMATION

#### ZACK SOGOLOFF

Executive Vice President

[zack@goodmanrealestate.com](mailto:zack@goodmanrealestate.com)

#### TRISTAN PALMIERI

Sales Associate

[tristan@goodmanrealestate.com](mailto:tristan@goodmanrealestate.com)

216.381.8200 | [www.goodmanrealestate.com](http://www.goodmanrealestate.com)

#### CLEVELAND

25333 Cedar Road, Suite 305  
Cleveland, OH 44124



#### COLUMBUS

389 E. Livingston Avenue  
Columbus, OH 43215

