



WWW.GOODMANREALESTATE.COM
216.381.8200

MARYSVILLE EAST MARKETPLACE

Marysville, Ohio



HIGHLIGHTS

- **AVAILABLE:** New retail space and outparcels available
- New multi-use development on SR-36 near the intersection of SR-33 in Marysville, 27 miles northwest of Columbus
- Situated at the entrance of a 1,900 AC development, which will include almost 1,000 single-family and multi-family units
- 4.1% projected annual growth between 2025 and 2030 within a 3-mile radius
- Marysville is the county seat of Union County, which is the fastest growing county in the state on a percentage basis
- Less than 13 minutes from Honda Marysville Auto Plant, the largest auto plant in North America
- Five minutes from Scotts Miracle-Gro Global Headquarters

DEMOGRAPHICS

POPULATION	3 MILE	5 MILE	7 MILE
2030 Projection	23,721	36,710	43,813
2025 Estimate	22,804	35,371	42,201
INCOME	3 MILE	5 MILE	7 MILE
2025 Average	\$113,752	\$122,234	\$127,064
2025 Median	\$97,685	\$105,138	\$109,097
DAYTIME POPULATION	3 MILE	5 MILE	7 MILE
2025 Employees	17,142	19,850	21,289

LEASING INFORMATION

www.goodmanrealestate.com
216.381.8200

CLEVELAND

THE OFFICES OF LEGACY VILLAGE
25333 CEDAR ROAD, SUITE 305
CLEVELAND, OH 44124

COLUMBUS

100 W OLD WILSON BRIDGE ROAD,
SUITE 207
WORTHINGTON, OH 43085

DANIEL CLARK

EVP and Director, Columbus Office
daniel@goodmanrealestate.com

JOE BELINSKE

Sales Associate, Columbus Office
joe@goodmanrealestate.com



LEASING INFORMATION

www.goodmanrealestate.com

216.381.8200

DANIEL CLARK

EVP and Director, Columbus Office
daniel@goodmanrealestate.com

JOE BELINSKE

Sales Associate, Columbus Office
joe@goodmanrealestate.com

MARYSVILLE EAST MARKETPLACE

Marysville, Ohio



THE INFORMATION ABOVE HAS BEEN OBTAINED FROM SOURCES BELIEVED TO BE RELIABLE. GOODMAN REAL ESTATE SERVICES GROUP LLC AND ITS AGENTS, ASSOCIATES, AND EMPLOYEES MAKE NO GUARANTEE, WARRANTY OR REPRESENTATION ABOUT IT. ALL IMAGES CONTAINED HEREIN ARE THE PROPERTY OF GOODMAN REAL ESTATE SERVICES GROUP LLC AND SHALL NOT BE DUPLICATED OR REPRODUCED WITHOUT EXPRESS WRITTEN CONSENT OF GOODMAN REAL ESTATE SERVICES GROUP LLC. YOU ACKNOWLEDGE THAT, AS REQUIRED BY THE STATE OF OHIO, YOU HAVE RECEIVED THE CONSUMER GUIDE TO AGENCY RELATIONSHIPS.



APR 26



LEASING INFORMATION

www.goodmanrealestate.com

216.381.8200

DANIEL CLARK

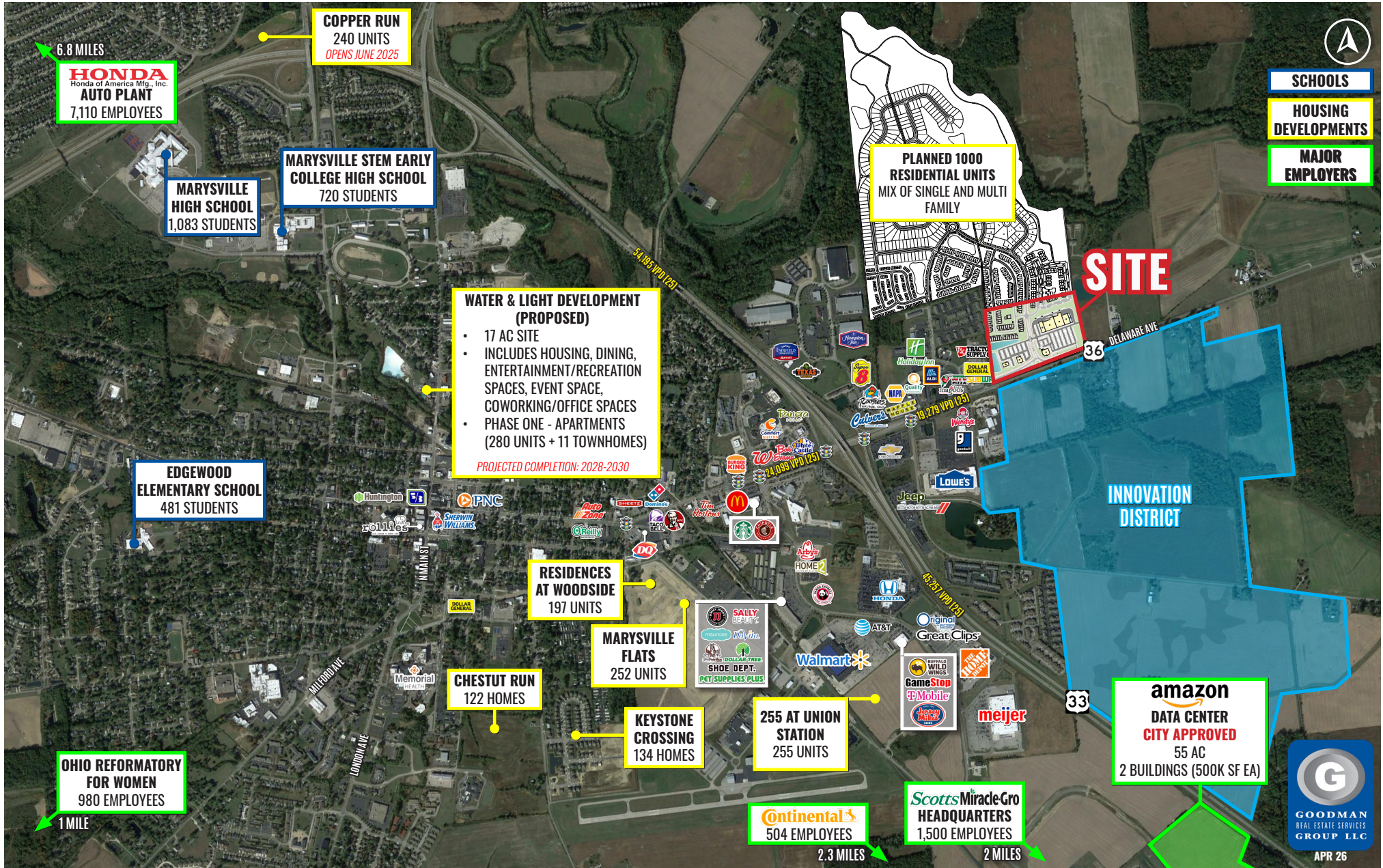
EVP and Director, Columbus Office
daniel@goodmanrealestate.com

JOE BELINSKE

Sales Associate, Columbus Office
joe@goodmanrealestate.com

MARYSVILLE EAST MARKETPLACE

Marysville, Ohio



THE INFORMATION ABOVE HAS BEEN OBTAINED FROM SOURCES BELIEVED TO BE RELIABLE. GOODMAN REAL ESTATE SERVICES GROUP LLC AND ITS AGENTS, ASSOCIATES, AND EMPLOYEES MAKE NO GUARANTEE, WARRANTY OR REPRESENTATION ABOUT IT. ALL IMAGES CONTAINED HEREIN ARE THE PROPERTY OF GOODMAN REAL ESTATE SERVICES GROUP LLC AND SHALL NOT BE DUPLICATED OR REPRODUCED WITHOUT EXPRESS WRITTEN CONSENT OF GOODMAN REAL ESTATE SERVICES GROUP LLC. YOU ACKNOWLEDGE THAT, AS REQUIRED BY THE STATE OF OHIO, YOU HAVE RECEIVED THE CONSUMER GUIDE TO AGENCY RELATIONSHIPS.



MARYSVILLE EAST MARKETPLACE

Marysville, Ohio

LEASING INFORMATION

P 216.381.8200
F 216.381.8211

WWW.GOODMANREALESTATE.COM

CLEVELAND

THE OFFICES OF LEGACY VILLAGE
25333 CEDAR ROAD, SUITE 305
CLEVELAND, OH 44124

COLUMBUS

100 OLD WILSON BRIDGE ROAD,
SUITE 207
WORTHINGTON, OHIO 43085

DANIEL CLARK

EVP and Director of Columbus Office
daniel@goodmanreal estate.com

JOE BELINSKE

Sales Associate, Columbus Office
joe@goodmanreal estate.com



KEY

- LEASED
- NEGOTIATING
- AVAILABLE
- NOT PART

UNIT	TENANT	SIZE (SQ. FT.)
1	Negotiating	4,040
2	Negotiating	1.7 AC
3	Negotiating	8,470
4	Negotiating	24,000
5	Negotiating	20,080
6	Negotiating	12,040
7	Available	4,200
8	Negotiating	7,828



SITE SUMMARY 79,000±

THE INFORMATION ABOVE HAS BEEN OBTAINED FROM SOURCES BELIEVED TO BE RELIABLE. GOODMAN REAL ESTATE SERVICES GROUP LLC AND ITS AGENTS, ASSOCIATES, AND EMPLOYEES MAKE NO GUARANTEE, WARRANTY OR REPRESENTATION ABOUT IT. ALL IMAGES CONTAINED HEREIN ARE THE PROPERTY OF GOODMAN REAL ESTATE SERVICES GROUP LLC AND SHALL NOT BE DUPLICATED OR REPRODUCED WITHOUT EXPRESS WRITTEN CONSENT OF GOODMAN REAL ESTATE SERVICES GROUP LLC. YOU ACKNOWLEDGE THAT, AS REQUIRED BY THE STATE OF OHIO, YOU HAVE RECEIVED THE CONSUMER GUIDE TO AGENCY RELATIONSHIPS.