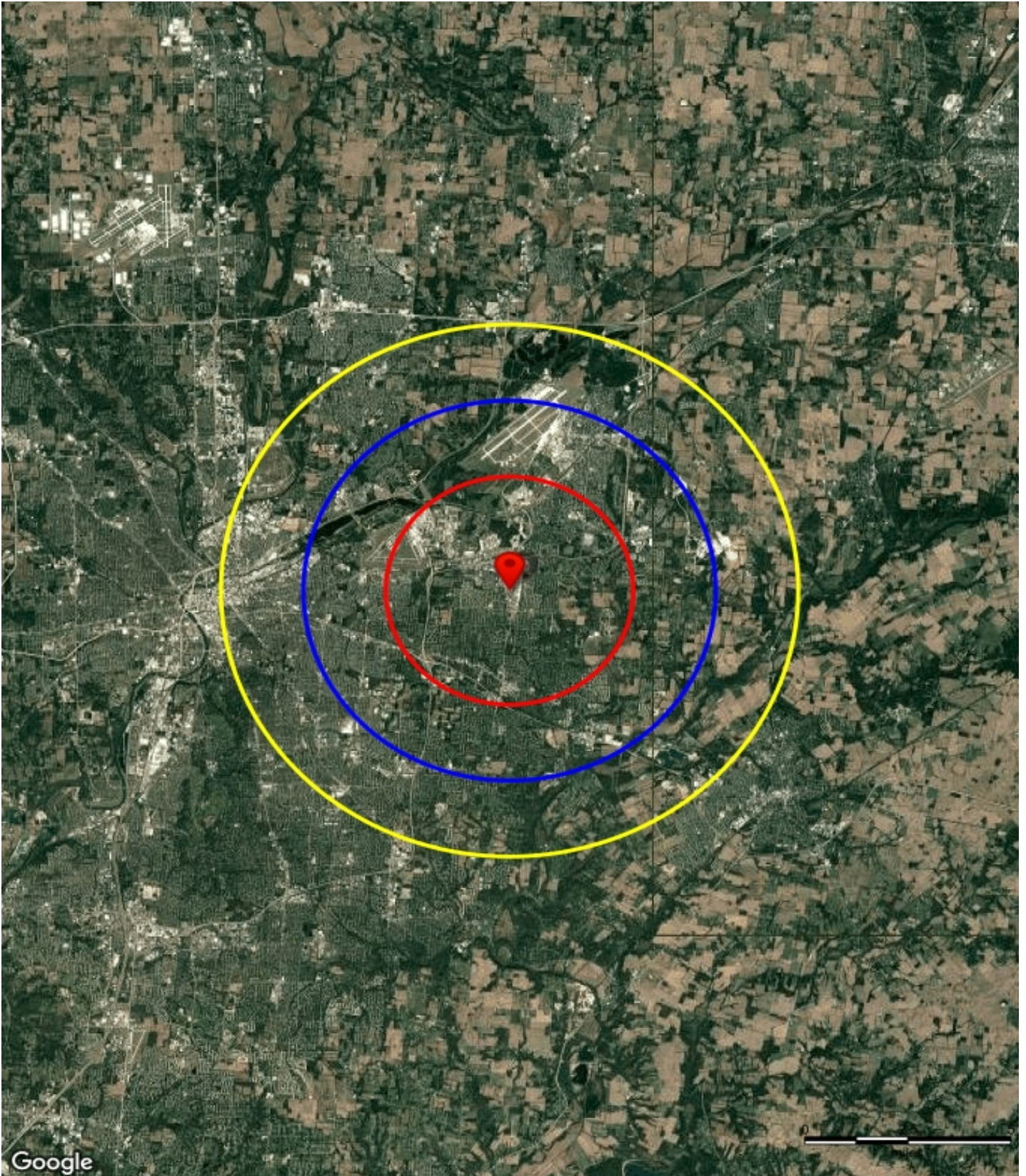




2675 Fairfield Cmns, Beavercreek, OH 45431





## 2675 Fairfield Cmns, Beavercreek, OH 45431

### Summary Profile

Summary Profile	2675 Fairfield Cmns, Beavercreek, OH 45431 0 - 3 mi	2675 Fairfield Cmns, Beavercreek, OH 45431 0 - 5 mi	2675 Fairfield Cmns, Beavercreek, OH 45431 0 - 7 mi
<b>Population</b>			
Current Year Estimated Population	51,566	128,588	247,896
5 Year Projected Population	51,175	127,265	245,350
2020 Census Population	49,732	126,122	245,117
Projected Annual Growth 2025-2030	-0.8%	-1.0%	-1.0%
Median Age	35	38	38
<b>Households</b>			
Current Year Estimated Households	21,757	54,191	102,549
5 Year Projected Households	21,611	53,618	101,402
2020 Census Households	21,003	52,993	101,260
Projected Annual Growth 2025-2030	-0.7%	-1.1%	-1.1%
<b>Race and Ethnicity</b>			
Est. White	77.2%	78.6%	77.3%
Est. Black	6.3%	6.6%	8.1%
Est. Asian	5.1%	3.5%	3.1%
Est. Other	7.0%	6.5%	6.3%
Est. Hispanic	4.4%	4.7%	5.1%
<b>Income</b>			
Est. Average Household Income	\$ 107,485	\$ 103,764	\$ 98,793
Est. Median Household Income	\$ 86,317	\$ 80,295	\$ 75,195
Est. Per Capita Income	\$ 45,349	\$ 43,729	\$ 40,869
<b>Education - Age 25+</b>			
Less than 9th grade	1.6%	2.5%	2.7%
Some High School, no diploma	3.5%	5.2%	5.2%
High School Graduate (or GED)	21.3%	23.7%	24.9%
Some College, no degree	21.8%	22.3%	22.9%
Associate Degree	9.9%	10.5%	10.1%
Bachelor's Degree	22.0%	19.3%	18.8%
Graduate Degree	19.9%	16.5%	15.3%
<b>Businesses and Employees</b>			
Est. Total Businesses	1,421	3,031	5,468
Est. Total Employees	25,547	94,083	141,941
Est. Employee Population per Business	18.0	31.0	26.0
Est. Residential Population per Business	36.3	42.4	45.3



2675 Fairfield Cmns, Beavercreek, OH 45431

## Study Areas

2675 Fairfield Cmns, Beavercreek, OH 45431

Lat: 39.76293, Long: -84.05459

## Maps

[2675 Fairfield Cmns, Beavercreek, OH 45431](#)

## Profile Tables

[Summary Profile](#)

Prepared on: 3/12/2026 7:37:49 PM