



WWW.GOODMANREALESTATE.COM  
216.381.8200

# COVENTRY RESTAURANT SPACE

## Cleveland Heights, Ohio



### HIGHLIGHTS

- Located in Coventry Village, a vibrant and walkable neighborhood with a diverse array of eclectic shops and dining
- Serving the densely populated adjacent neighborhood including Cleveland Heights, Shaker Heights, University Heights, and South Euclid
- Join nearby Coventry Village anchors The Grog Shop and Tommy's Restaurant and other long-time neighboring tenants including Marc's, Inn on Coventry, Pacific East, and more
- **AVAILABLE:** 4,227 SF former restaurant

### DEMOGRAPHICS

POPULATION	3 MILE	5 MILE	7 MILE
2031 Projection	145,936	305,799	468,047
2026 Estimate	150,198	315,309	475,035
INCOME	3 MILE	5 MILE	7 MILE
2026 Average	\$87,123	\$85,133	\$87,802
2026 Median	\$53,701	\$51,997	\$57,013
DAYTIME POPULATION	3 MILE	5 MILE	7 MILE
2026 Employees	161,629	237,078	356,740

### LEASING INFORMATION

www.goodmanrealestate.com  
216.381.8200

#### CLEVELAND

THE OFFICES OF LEGACY VILLAGE  
25333 CEDAR ROAD, SUITE 305  
CLEVELAND, OH 44124

#### COLUMBUS

100 W OLD WILSON BRIDGE ROAD,  
SUITE 207  
WORTHINGTON, OH 43085

### TRISTAN PALMIERI

Sales Associate  
tristan@goodmanrealestate.com

### SETH MARKS

Senior Director  
seth@goodmanrealestate.com



# LEASING INFORMATION

www.goodmanrealestate.com

216.381.8200

## TRISTAN PALMIERI

Sales Associate  
tristan@goodmanrealestate.com

## SETH MARKS

Senior Director  
seth@goodmanrealestate.com

# COVENTRY RESTAURANT SPACE

## Cleveland Heights, Ohio



APR 26

THE INFORMATION ABOVE HAS BEEN OBTAINED FROM SOURCES BELIEVED TO BE RELIABLE. GOODMAN REAL ESTATE SERVICES GROUP LLC AND ITS AGENTS, ASSOCIATES, AND EMPLOYEES MAKE NO GUARANTEE, WARRANTY OR REPRESENTATION ABOUT IT. ALL IMAGES CONTAINED HEREIN ARE THE PROPERTY OF GOODMAN REAL ESTATE SERVICES GROUP LLC AND SHALL NOT BE DUPLICATED OR REPRODUCED WITHOUT EXPRESS WRITTEN CONSENT OF GOODMAN REAL ESTATE SERVICES GROUP LLC. YOU ACKNOWLEDGE THAT, AS REQUIRED BY THE STATE OF OHIO, YOU HAVE RECEIVED THE CONSUMER GUIDE TO AGENCY RELATIONSHIPS.



## LEASING INFORMATION

[www.goodmanrealestate.com](http://www.goodmanrealestate.com)

216.381.8200

### TRISTAN PALMIERI

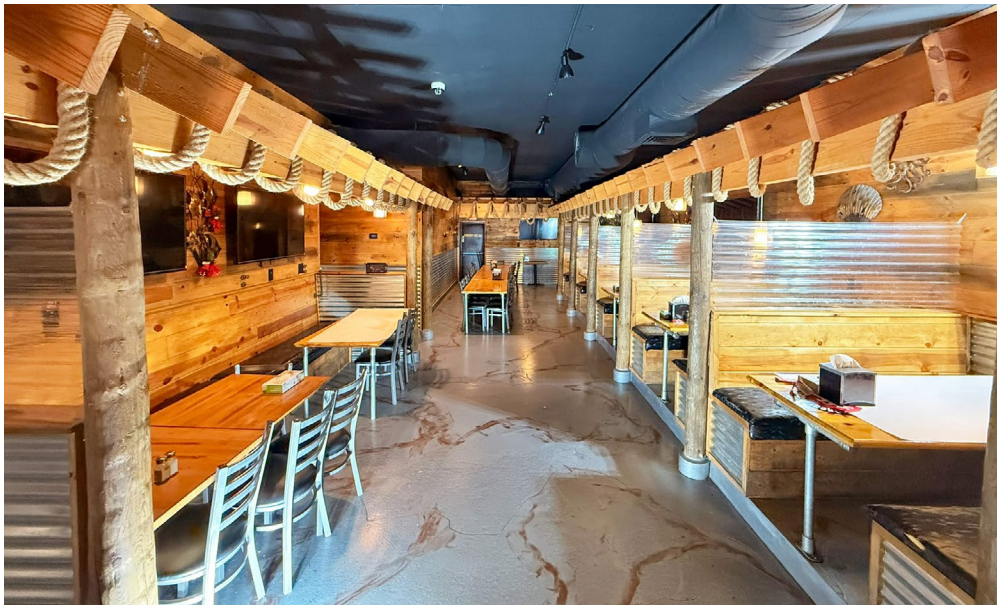
Sales Associate  
[tristan@goodmanrealestate.com](mailto:tristan@goodmanrealestate.com)

### SETH MARKS

Senior Director  
[seth@goodmanrealestate.com](mailto:seth@goodmanrealestate.com)

# COVENTRY RESTAURANT SPACE

Cleveland Heights, Ohio





## LEASING INFORMATION

[www.goodmanrealestate.com](http://www.goodmanrealestate.com)

216.381.8200

### TRISTAN PALMIERI

Sales Associate  
[tristan@goodmanrealestate.com](mailto:tristan@goodmanrealestate.com)

### SETH MARKS

Senior Director  
[seth@goodmanrealestate.com](mailto:seth@goodmanrealestate.com)

# COVENTRY RESTAURANT SPACE

Cleveland Heights, Ohio

